



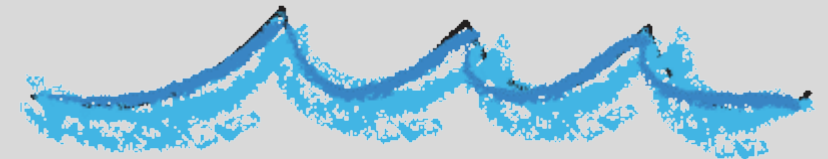
Health & Safety Regional Task Force

Welcome



***Early Learning Resource Center
Region 17***

***Health & Safety Regional Task Force
June 9, 2021***



In partnership with Montgomery County Department of Health and Human Services
Serving Montgomery County
P.O. Box 311 | 1430 DeKalb St. | Norristown, PA 19404 | (610) 278-3707 | montcopa.org/elrc

What is the Health & Safety Regional Task Force?

ELRC Region 17 acts as a connection among support systems and between support systems. We have created a Health and Safety Regional Task Force which brings together professionals in a regional, collaborative effort. The Task Force provides coordinated, consistent health and safety related supports to ECE providers. We work together to identify needs, maximize resources, and leverage local and statewide strengths to address needs and improve services.

The Health and Safety Regional Task Force is comprised of ELRC Quality Coaches, Program Quality Assessors, Preschool Program Specialists, EI/EITA Consultants, Certification Representatives, and Infant and Early Childhood Mental Health (IECMH) Consultants. ELRC 17 has created a Task Force informed by an assessment of the needs of providers in the region. **The individual expertise and strengths of each task force member guides the work and the allocation of effort.** Now more than ever, we need to work together to ensure that health and safety is at the forefront of early childhood education.

Health & Safety Regional Task Force Objectives

- Meet regularly to discuss activities, requests, findings, challenges, and needs
- Identify areas of expertise and create a phone/contact list
- Determine regional needs, approaches to meeting the needs, and the system to support programs within the region
- Set up systems for communication
- Create resource connections for programs without duplicating services
- Share findings with their ELRC Local Leadership Councils on a regular basis
- Report recent work and developments to the Pennsylvania Key Senior Health Manager as requested

Health & Safety Regional Task Force Commitments

- Our work is relationship-based with the goal of supporting cross-sector partnerships and collaborative responsiveness to health and safety concerns.
- We acknowledge that conversations and information shared are to be privileged and confidential.
- We work collaboratively to support regional dialogue, sharing resources and supporting the implementation of best practices around health & safety in ECE environments.

Health & Safety Regional Task Force Commitments

- Our commitment to best practice extends to engaging Certification Representatives when any program is observed to be out of compliance or expresses a need for additional clarification about Pennsylvania child care regulations and/or implementation of regulatory guidance.
- We will continually review Center for Disease Control and Prevention (CDC) and government Guidance on best practice and Pennsylvania regulatory compliance based on the evolving nature of the pandemic and emerging evidence.

Health & Safety Regional Task Force Goals

ELRC agencies will ensure that their Health & Safety Regional Task Force have developed long term goals to guide the team's work even after the COVID-19 pandemic subsides.

Examples of long-term goals for the Regional Task Force:

- Keeping the systems intact which are being created by this effort
- Maintaining these coordinated efforts for the future
- Creating a multidisciplinary group
- **Creating sustainable community resources to support community well-being**



Health & Safety Regional Task Force

Montgomery County Office of Public Health

Elizabeth M. Van Aulen, COVID-19 Field Supervisor
Monica Giacomucci, Communicable Field Supervisor

Updates on COVID-19

Vaccine

Testing sites

Statistics

Other information relevant to early childhood education field



In partnership with Montgomery County Department of Health and Human Services
Serving Montgomery County
P.O. Box 311 | 1430 DeKalb St. | Norristown, PA 19404 | (610) 278-3707 | montcopa.org/elrc

Contact Office of Public Health

Phone: 610-278-6211 (Call will go to voicemail)

Email: MCSSchoolsCovid19@montcopa.org

Website for additional info: www.montcopa.org/COVID-19

Email for general questions: COVID19@montcopa.org

COVID Call Center (833) 875-3967, Monday – Saturday, 8:00am - 8:00pm

Face Covering Guidance

Child care programs **must** continue use of face coverings both indoors and outdoors. Programs are instructed to follow announcement C-20-12 Operational Guidance for Child Care Facilities updated and reissued April 14, 2021. The Updated Order of the Secretary of the Pennsylvania Department of Health remains in effect. These policies apply to child care and other early learning settings regardless of staff vaccination status.

<https://www.pakeys.org/wp-content/uploads/2021/04/Announcement-C-20-12-Revised-COVID-19-Operational-Guidance-for-Childcare-Facilities-FINAL.pdf>

Face Covering Guidance

The CDC evaluates and updates guidance for child care and other early learning programs such as Head Start and prekindergarten as needed. OCDEL will continue to monitor changes to the guidance and update the field through the Certification listserv, the ECE Recap and Early Ed News Special Announcements.

CDC released new Toolkits for Child Care Programs

<https://www.cdc.gov/coronavirus/2019-ncov/communication/toolkits/childcare.html>

COVID: Guidance for operating

Please see the ECE Recap Announcements from Monday, May 17, 2021, and Monday, May 3, 2021, which OCDEL issued in response to new CDC guidance on masks for individuals who are fully vaccinated.

<https://www.cdc.gov/coronavirus/2019-ncov/vaccines/fully-vaccinated-guidance.html>

The Pennsylvania Key Resource for Frequently Asked Questions (FAQ)

Issued: April 21, 2021

Guidance for Operating a Childcare Center, Group Home or Family Child Care During the Coronavirus Pandemic in Pennsylvania

<https://s35729.pcdn.co/wp-content/uploads/2021/04/FAQ-Update-4.22.21.pdf>

Programs must continue to report positive cases of COVID to DHS Certification and Montco OPH.

Lyme Disease and Other Tick-borne Diseases

The Pennsylvania Department of Health (PADOH) has identified recent sustained increases in tick bite-related emergency department visits in nearly all regions of the state. This trend is expected, as tick exposures in Pennsylvania generally increase during spring and summer months. Please be reminded that tick-borne diseases occur annually in Pennsylvania.

Please view the Health Advisory for more information:

[2021 - PAHAN-571-5-13-ADV Lyme Disease and Other Tick-borne Diseases in Pennsylvania](#)

Lyme Disease and Other Tick-borne Diseases

- From April through September, providers should have a heightened clinical suspicion for tickborne diseases.
- Several other non-Lyme tickborne disease are reported annually in Pennsylvania.
- Individuals with exposure to wooded and brushy areas with high grass and leaf litter are a greatest risk of tick exposure.
- Decrease risk by:
 - Wearing light-colored clothing which makes it easier to see crawling ticks
 - Conduct a full body tick check (including pets) after spending time in tick habitat
 - Bath/shower within 2 hours after coming indoors

Lyme Disease and Other Tick-borne Diseases

- If an attached tick is found, it should be promptly removed using fine-tipped tweezers. The tick should be grasped as close to the skin's surface as possible and pulled upward with steady, even pressure.
- Testing of individual ticks is discouraged.
- Providing healthcare and treating persons for tick-borne illnesses should not be delayed due to the COVID-19 pandemic.
- For questions, please call 1-877-PA-HEALTH (1-877-724-3258) or your local health department for more information.



Health & Safety Regional Task Force

Pregnancy & Postpartum Recovery Program

Kim Friel, MSW

Pregnancy & Postpartum Recovery Project Coordinator

kim@unityrecovery.org

<https://unityrecovery.org>

267.207.5698



In partnership with Montgomery County Department of Health and Human Services
Serving Montgomery County
P.O. Box 311 | 1430 DeKalb St. | Norristown, PA 19404 | (610) 278-3707 | montcopa.org/elrc



Health & Safety Regional Task Force

LOURDES JOHNSON

INFANT-EARLY CHILDHOOD MENTAL HEALTH CONSULTATION PROGRAM

THE PENNSYLVANIA KEY

In support of Pennsylvania's Office of Child Development & Early Learning

www.pakeys.org



In partnership with Montgomery County Department of Health and Human Services
Serving Montgomery County
P.O. Box 311 | 1430 DeKalb St. | Norristown, PA 19404 | (610) 278-3707 | montcopa.org/elrc

The Pennsylvania Key IECMHC Virtual Office Hours

The Pennsylvania Key Infant-Early Childhood Mental Health Consultation (IECMHC) Program is offering a new service: IECMHC Virtual Office Hours. IECMHC Virtual Office Hours is currently being piloted in ELRCs 11-19, with plans underway to make the service more widely available to ELRCs in the future. IECMH Consultants are available by appointment to provide IECMH Virtual Office Hours consultation via telephone or video conference.

If you have children enrolled in your program who have social, emotional, or behavioral challenges, we strongly encourage you to reach out and utilize this service.

The Pennsylvania Key IECMHC Virtual Office Hours

IECMHC Virtual Office Hours is a short-term, collaborative, problem-solving conversation to help you find next steps for: Child Social-Emotional Concerns, Child Behavioral or Developmental Concerns, Emotional Well-being of Teachers and Caregivers, and Partnering with Families. Get more info on IECMHC Program and how to access IECMHC Virtual Office Hours.

<https://www.pakeys.org/wp-content/uploads/2021/04/Pennsylvania-Key-IECMHC-Virtual-Office-Hours-Flyer.pdf>

Webinar Series for ECE Professionals

The Pennsylvania Key's Infant Early Childhood Mental Health Consultation (IECMHC) Program has partnered with ZERO TO THREE to bring several no-cost webinar series to Pennsylvania Early Childhood Educators (ECE), Early Intervention, and Home Visiting professionals to support their learning and growth. Each 90-minute session requires pre-registration and space is limited. Visit the Pennsylvania Key website for additional information and links to register.

<https://www.pakeys.org/iecmh/>

Relationships Are the Heart of Early Childhood Education Critical Competencies Intentional Teaching Series

- As children return to early childhood education programs, educators will be re-building relationships through responsive caregiving and using knowledge of young children's emotional capacities to guide development and learning, as well as behavior. The series, Relationships Are the Heart of Early Childhood Education, is delivered virtually over four weeks, supporting infant-toddler educators and supervisors in multiple early childhood education programs.
- The Critical Competencies define the responsive teacher-child interactions that support babies and toddlers, as well as their parents and caregivers in healing the trauma experienced in COVID. Application deadline is August 6, 2021.

<https://www.pakeys.org/wp-content/uploads/2021/05/ZTT-Relationships-are-Heart-of-ECE-Cohort-Application-FILLABLE.pdf>

Fire Safety Requirements for Certified Child Care Facilities

The Pennsylvania Office of Child Development and Early Learning (OCDEL), Bureau of Certification and Bureau of Policy & Professional Development have released the [Announcement C-21-02 Act 62 of 2020 Fire Safety Requirements for Certified Child Care Facilities](#). This Announcement describes the requirements in Act 62, signed into law July 14, 2020. This act revises fire safety requirements for certified child care facilities regulated under 55 Pa. Code, Chapters 3270, 3280, and 3290 relating to child care centers, group child care homes, and family child care homes.

Fire Safety Requirements for Certified Child Care Facilities

All certified child care facilities must maintain compliance with the Fire and Panic Act, the Pennsylvania Construction Code, and applicable regulations relating to fire detection devices or systems. Fire detection devices or systems must always be operable. The Announcement provides requirements for Certified Family Child Care Homes (FCCH), Certified Group Child Care Homes (Operating in a residence), Certified Child Care Centers (including Child Care Centers located in a school-building) and Group Child Care (NOT Operating in a Residence), requirements during inspections by OCDEL and more.



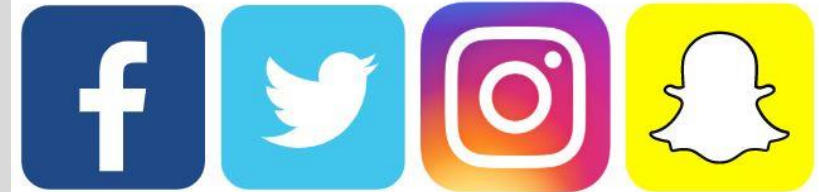
Health & Safety Regional Task Force

Announcements from other organizations

Questions, Comments, Concerns

We welcome your feedback!

Follow us on Social Media @HHSMontcoPA



In partnership with Montgomery County Department of Health and Human Services
Serving Montgomery County
P.O. Box 311 | 1430 DeKalb St. | Norristown, PA 19404 | (610) 278-3707 | montcopa.org/elrc

**Next Health & Safety Regional Task
Force meeting will be held on:**

**Wednesday, July 21, 2021
at 1:00 – 2:30 PM**



Follow us on Social Media @HHSMontcoPA

