

WISSAHICKON CREEK WATERSHED

The Wissahickon Creek watershed lies within the larger Wissahickon Creek watershed.

The Wissahickon Creek watershed covers a much larger area of 64 square miles, and is comprised of fifteen (15) municipalities in Montgomery County and the City of Philadelphia.



Watershed Area (In County):

25,866.00 acres

Stream Length (In County):

59.00 miles

2015 Impervious Cover (In County):

6,004.00 acres; 23%

Contributing Municipalities

- Lower Gwynedd Township
- Whitpain Township
- Upper Dublin Township
- Ambler Borough
- Whitmarsh Township
- Horsham Township
- Abington Township
- Montgomery Township
- Lansdale Borough
- Upper Gwynedd Township
- North Wales Borough
- Worcester Township
- Springfield Township
- Cheltenham Township

Associated Organizations & Agencies



WISSAHICKON CREEK WATERSHED

Key Watershed Documents

An Act 167 Stormwater Management Plan was completed for the Wissahickon Creek Watershed in 2014 under the leadership of the Center of Sustainable Communities at Temple University and NTM Engineering. [tell me more](#)

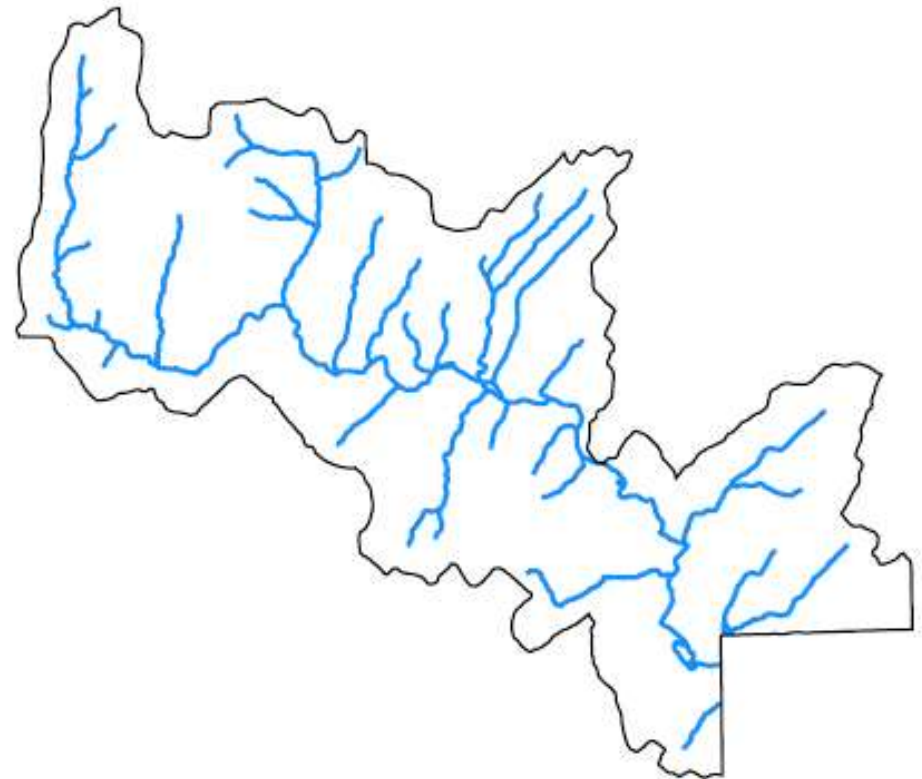
A draft Total Maximum Daily Load (TMDL) was established in May 2015 for the Wissahickon Creek Watershed related to phosphorous. In response the Wissahickon Watershed communities established a partnership and development the Wissahickon Water Quality Improvement Plan submitted to EPA/DEP in September 2019. [tell me more](#)

Major Tributaries

- Sunny Brook
- Lorraine Run
- Prophecy Creek
- Stuart Farm Creek
- Tannery Run
- Rose Valley Run
- Willow Run
- Trewellyn Creek
- Penllyn Creek
- Haines-Dittingers Creek

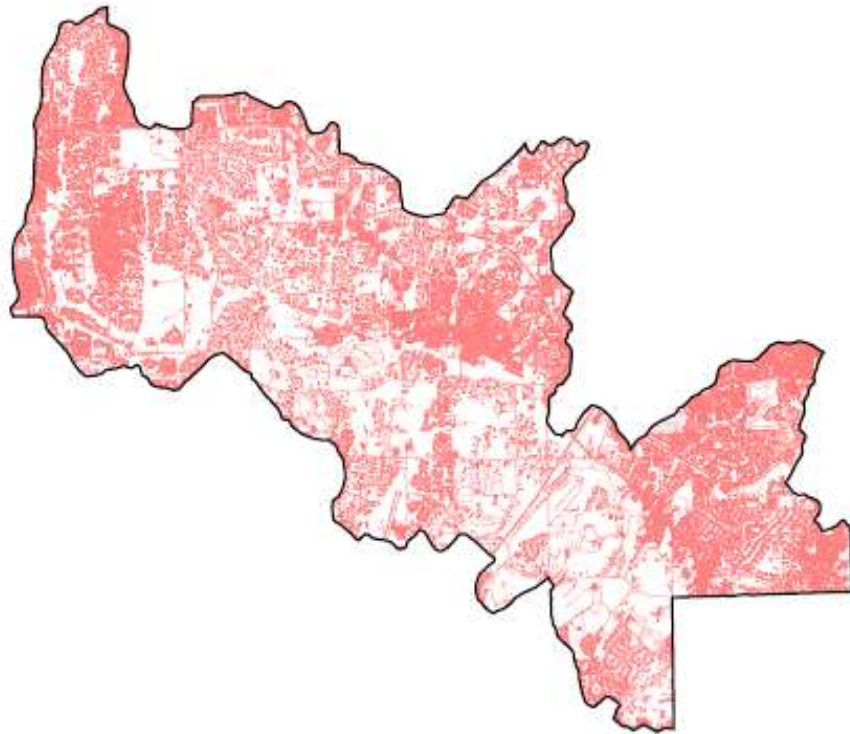
Key Watershed Maps

Major Waterbodies in Mainstem Wissahickon Creek Watershed
Within Montgomery County

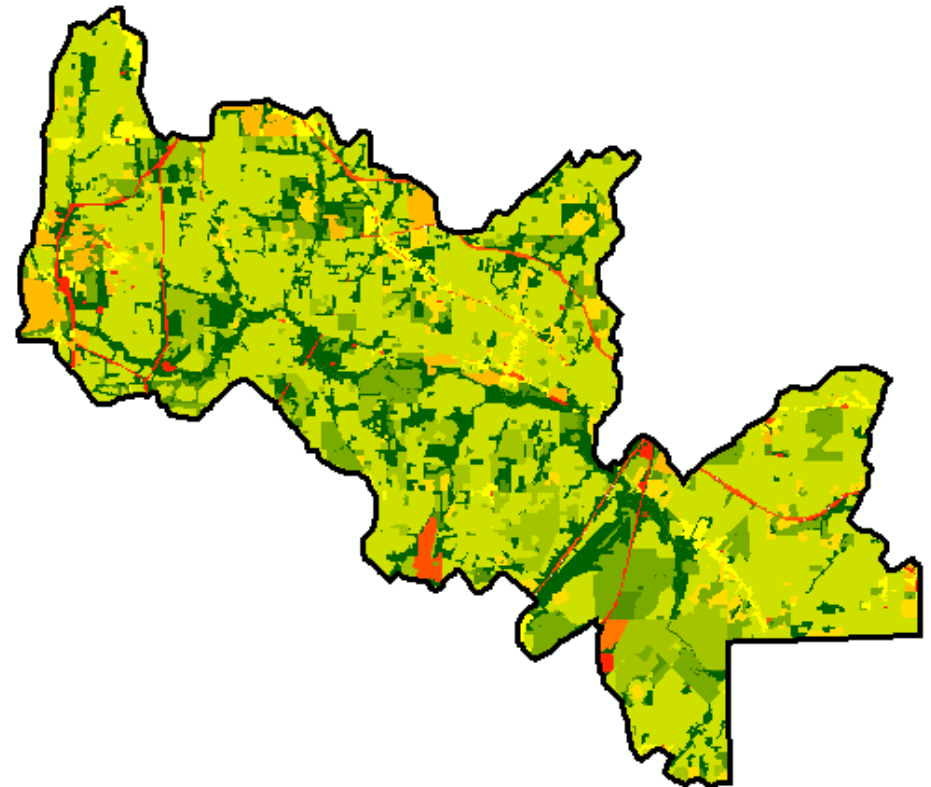


WISSAHICKON CREEK WATERSHED

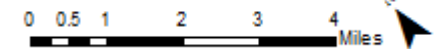
Impervious Surfaces In Mainstem Wissahickon Creek Watershed Within Montgomery County



Land Use In Mainstem Wissahickon Creek Watershed Within Montgomery County



- Land Use 2015 (DVRPC)**
- Wooded
 - Residential
 - Military
 - Water
 - Commercial
 - Mining
 - Undeveloped
 - Institutional
 - Transportation
 - Recreation
 - Industrial
 - Utility



Data Source: DVRPC 2015 Impervious Surface – Montgomery County, PA

Data Source: DVRPC 2015 Land Use – Montgomery County, PA

