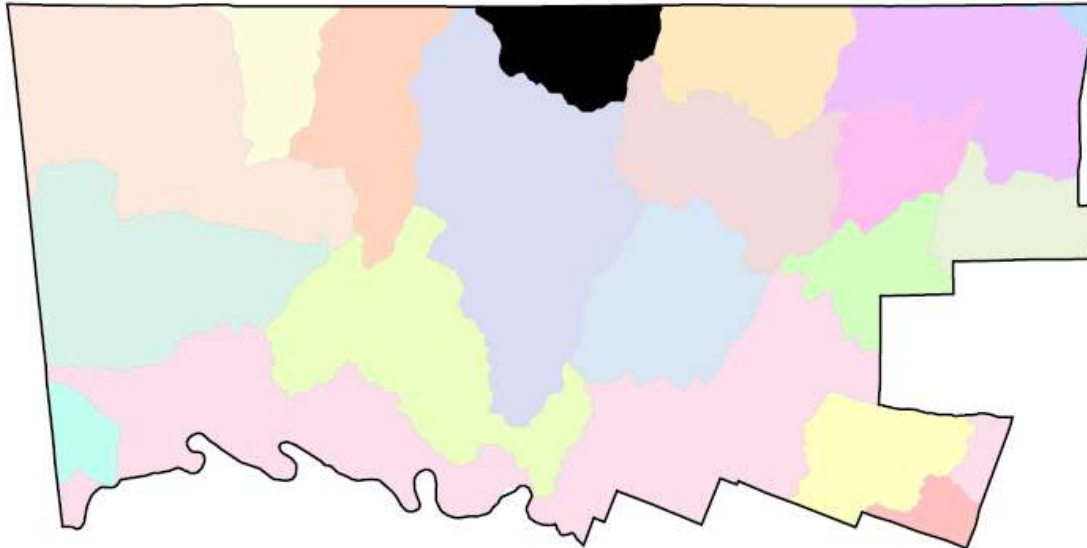


WEST BRANCH NESHAMINY CREEK

The West Branch Neshaminy Creek watershed area within the County lies within the larger Upper Neshaminy Creek watershed. The West Branch Neshaminy watershed covers an area of 25 square miles, and is comprised of municipalities in Montgomery and Bucks counties.



Watershed Area (In County):

8,475.00 acres

Stream Length (In County):

28.00 miles

2015 Impervious Cover (In County):

2,789.00 acres; 33%

Contributing Municipalities

- Franconia Township
- Souderton Township
- Hatfield Township
- Hatfield Borough
- Montgomery Township
- Towamencin Township
- Lansdale Borough

Associated Organizations & Agencies

[Neshaminy Creek Watershed Association](#)



WEST BRANCH NESHAMINY CREEK

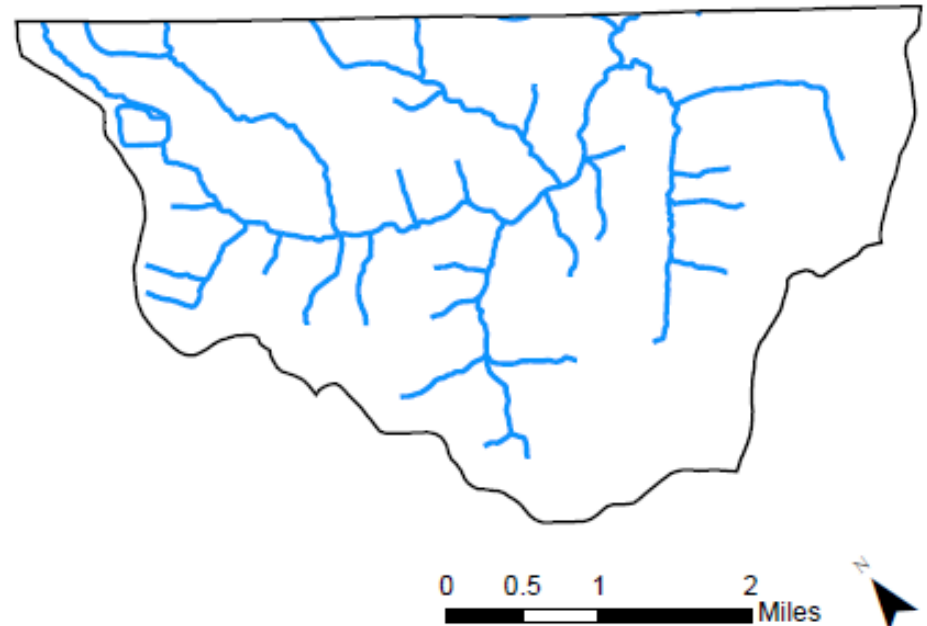
Key Watershed Documents

An Act 167 Stormwater Management Plan was completed for the Neshaminy Creek Watershed in 2010 under the leadership of the Bucks County Planning Commission. [tell me more](#)

Portions of the Neshaminy Creek watershed are impaired by excess phosphorus and sediment. [tell me more](#)

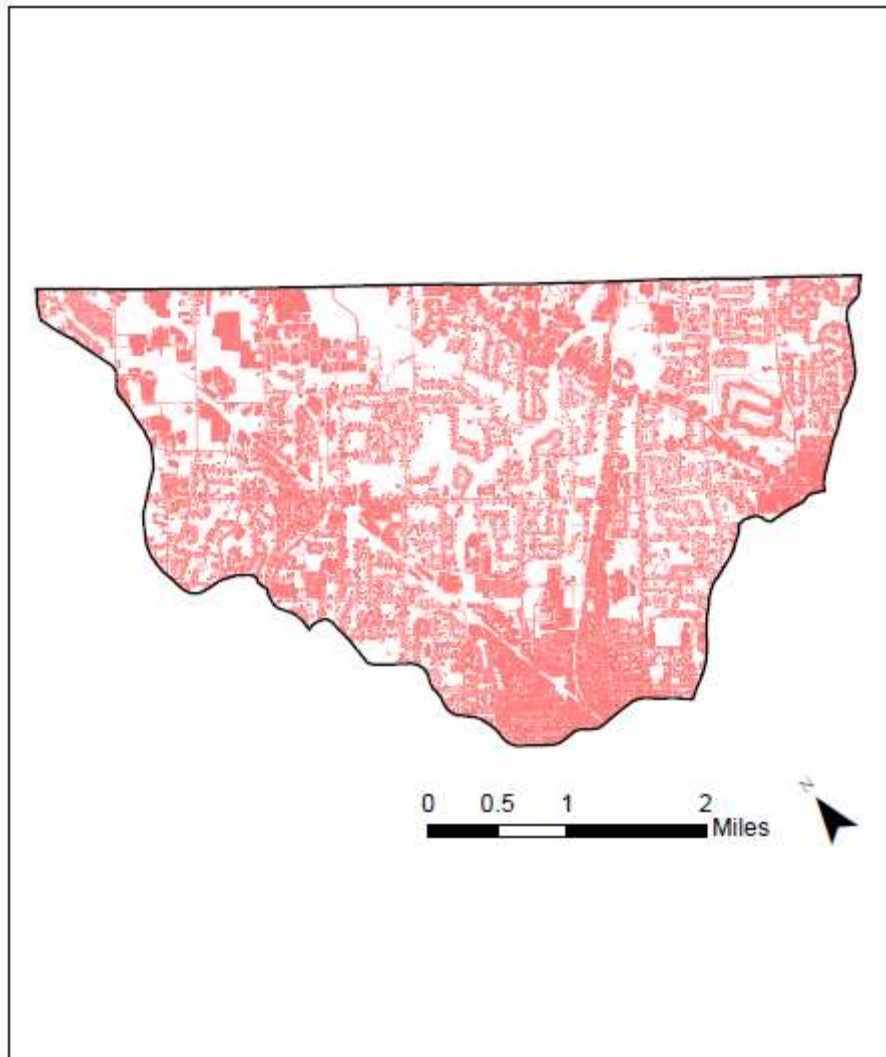
Key Watershed Maps

Major Waterbodies in West Branch Neshaminy Watershed
Within Montgomery County

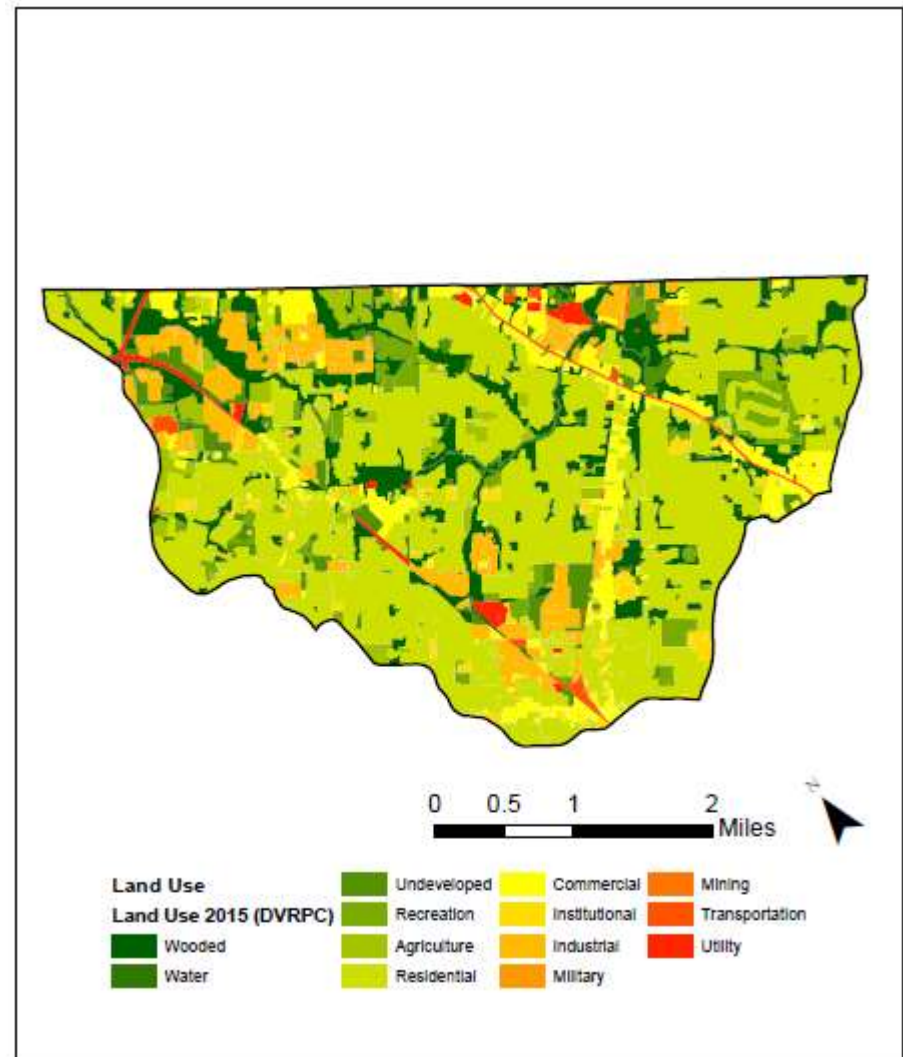


WEST BRANCH NESHAMINY CREEK

Impervious Surfaces In West Branch Neshaminy Creek Watershed Within Montgomery County



Land Use In West Branch Neshaminy Creek Within Montgomery County



Data Source: DVRPC 2015 Impervious Surface – Montgomery County, PA

Data Source: DVRPC 2015 Land Use – Montgomery County, PA

