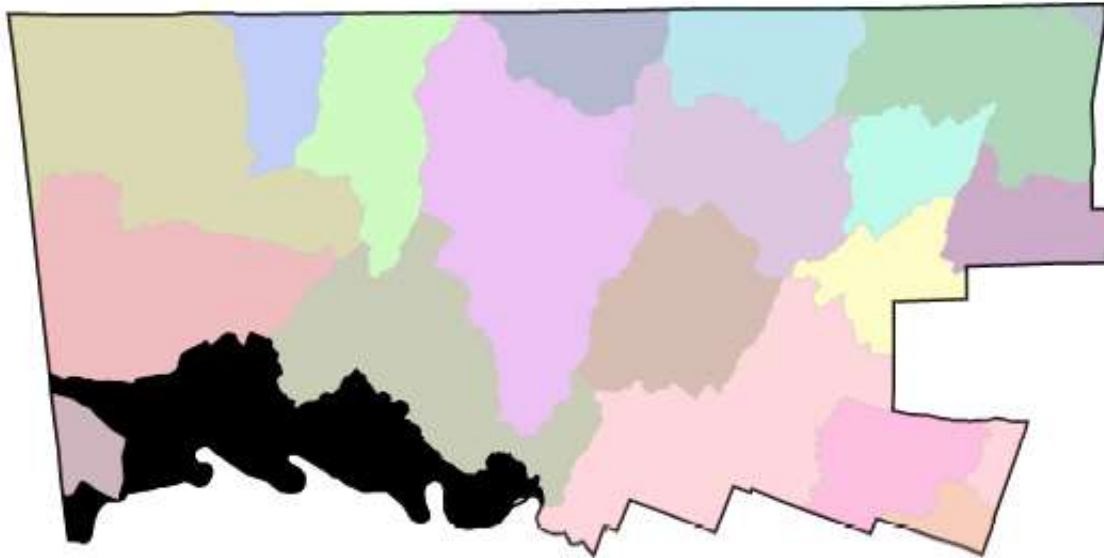


UPPER SCHUYLKILL CREEK WATERSHED

The Upper Schuylkill River watershed lies within the larger Schuylkill River watershed.

The Schuylkill River watershed is located in southeastern Pennsylvania and the river itself is the largest tributary of the Delaware River.

The river's watershed is almost 2,000 square miles and parts of eleven counties.



Watershed Area (In County):

26,312.00 acres

Stream Length (In County):

76.00 miles

2015 Impervious Cover (In County):

5,455.00 acres; 21%

Contributing Municipalities

- Upper Providence Township
- Trappe Borough
- Royerford Borough
- Limerick Township
- New Hanover Township
- Lower Pottsgrove Township
- Pottstown Borough
- Upper Pottsgrove Township
- West Pottsgrove Township
- Douglass Township

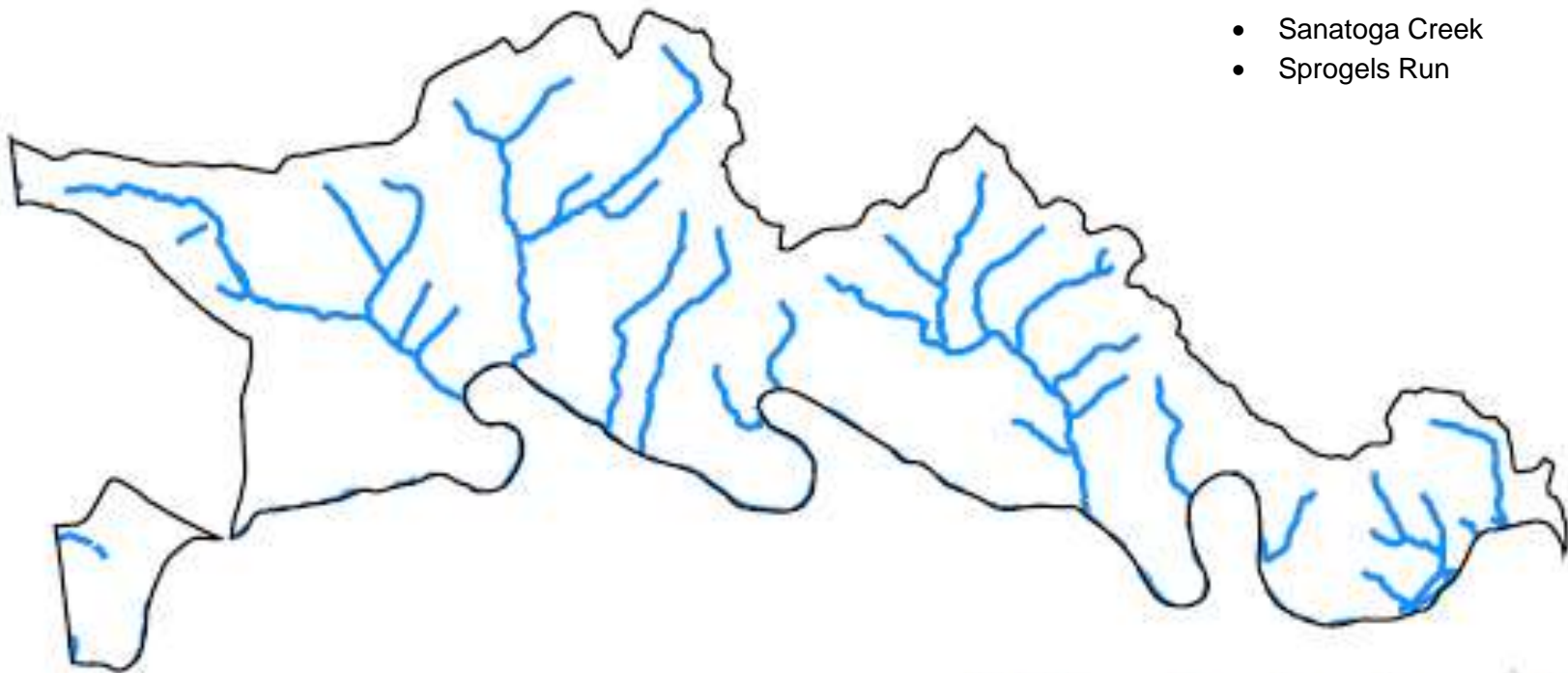
Associated Organizations & Agencies



UPPER SCHUYLKILL CREEK WATERSHED

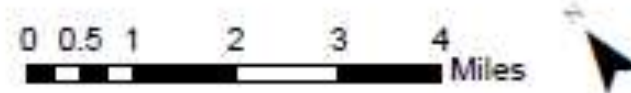
Key Watershed Maps

Major Waterbodies in Upper Schuylkill Creek Watershed Within Montgomery County



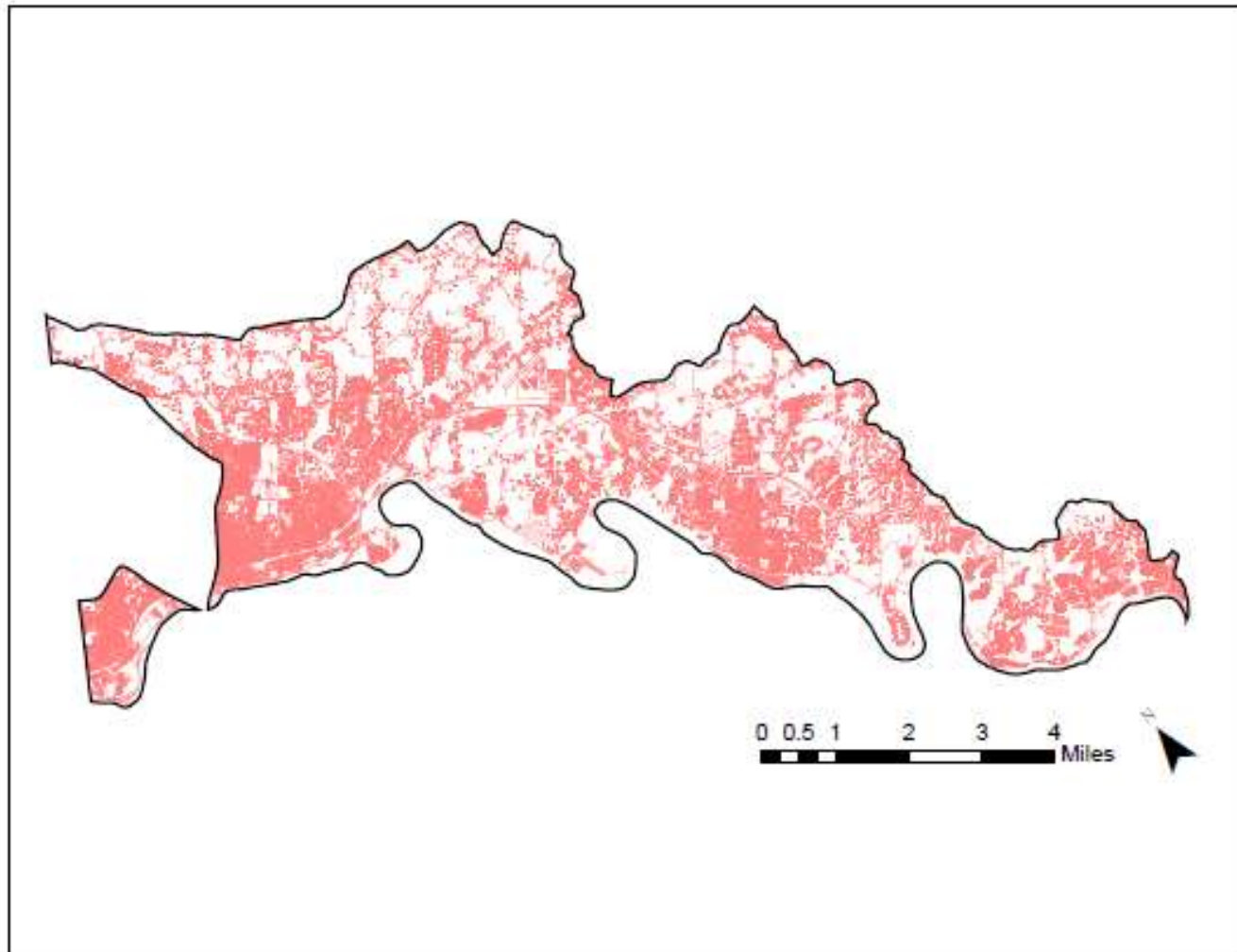
Major Tributaries

- Crossmans Run
- Mingo Creek
- Hartensine Creek
- Brooke Evans Creek
- Possum Hollow Run
- Sanatoga Creek
- Sprogels Run



UPPER SCHUYLKILL CREEK WATERSHED

Impervious Surfaces In Upper Schuylkill Creek Watershed Within Montgomery County

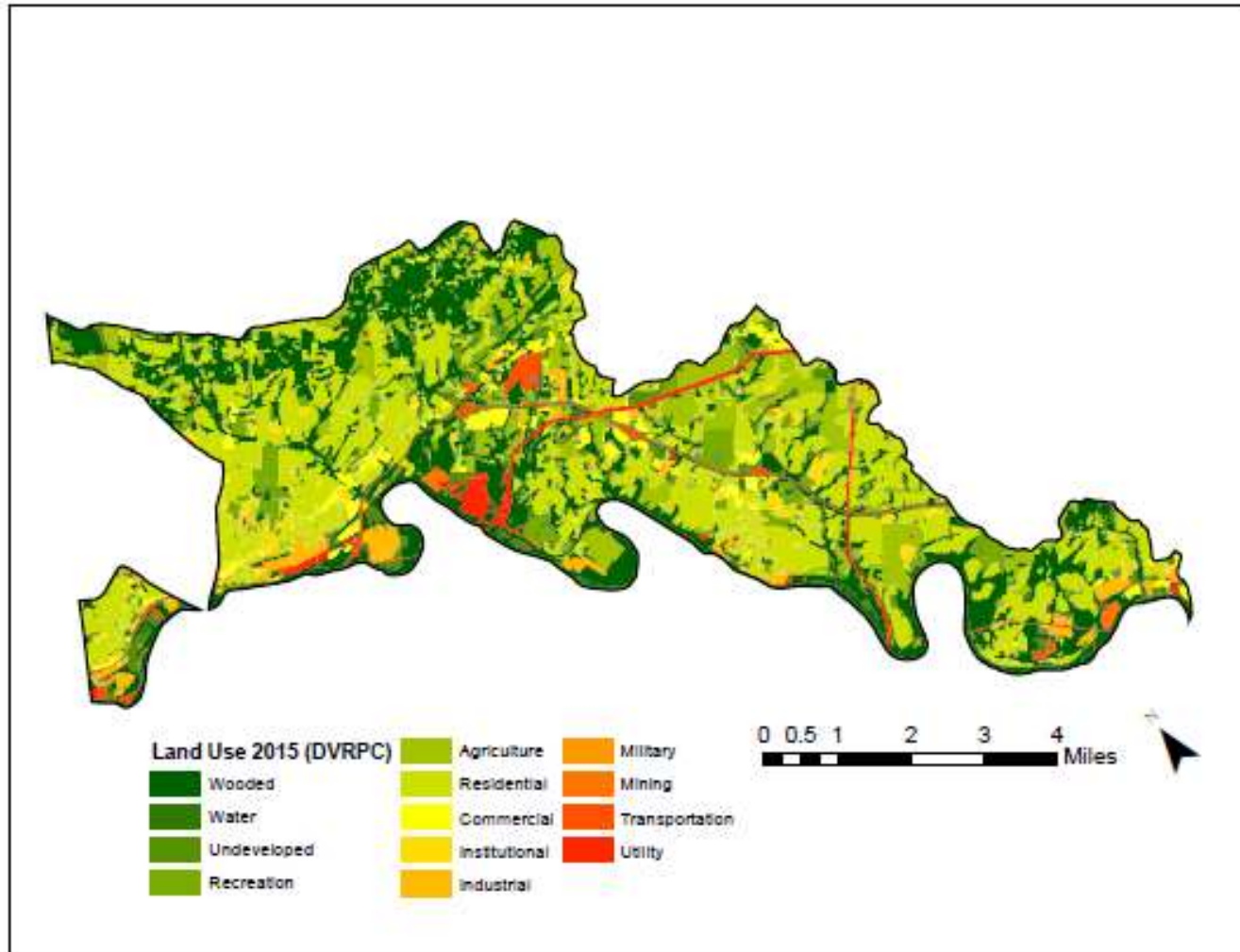


Data Source: DVRPC 2015 Impervious Surface – Montgomery County, PA



UPPER SCHUYLKILL CREEK WATERSHED

Land Use In Upper Schuylkill Creek Watershed Within Montgomery County



Data Source: DVRPC 2015 Land Use – Montgomery County, PA

