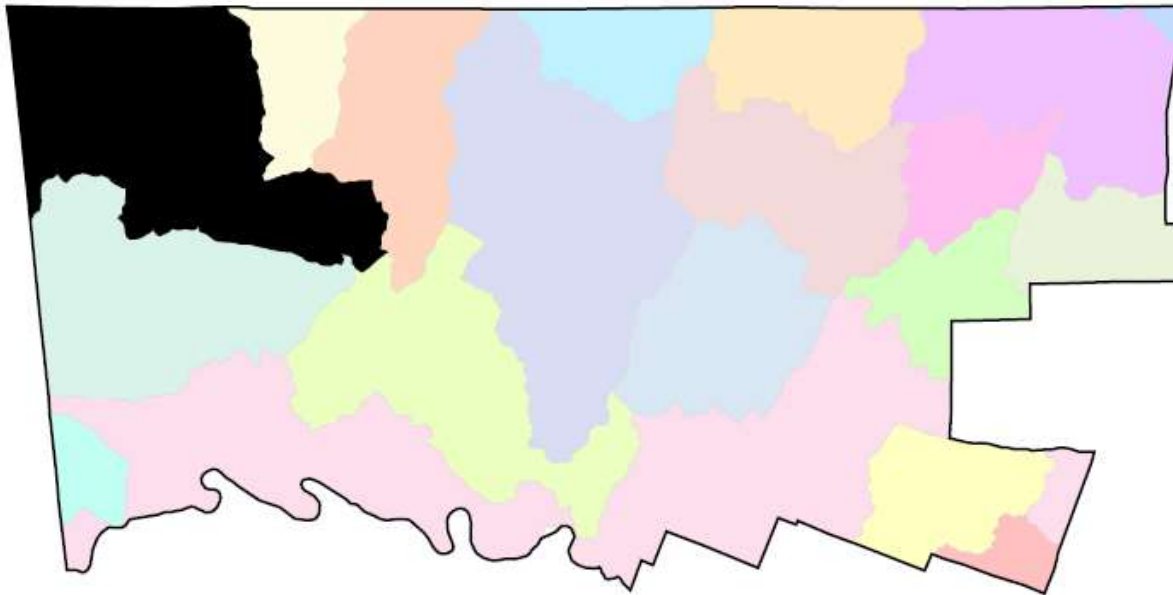


# UPPER PERKIOMEN CREEK WATERSHED

The Upper Perkiomen Creek watershed lies within the larger Perkiomen Creek watershed.

The river's watershed is almost 362 square miles, and is comprised of municipalities in Montgomery, Lehigh and Berks counties.



---

## Watershed Area (In County):

32,735.00 acres

## Stream Length (In County):

96.00 miles

## 2015 Impervious Cover (In County):

2,875.00 acres; 9%

---

### Contributing Municipalities

- Upper Hanover Township
- East Greenville Boroughs
- Pennsburg Borough
- Marlborough Township
- Douglass Township
- Red Hill Borough
- New Hanover Township
- Upper Frederick Township
- Green Lane Borough
- Upper Salford Township
- Lower Frederick Township
- Perkiomen Township

### Associated Organizations & Agencies



# UPPER PERKIOMEN CREEK WATERSHED

## Key Watershed Documents

An Act 167 Stormwater Management Plan was completed for the Perkiomen Creek Watershed in 2009 under the leadership of the Lehigh Valley Planning Commission. [tell me more](#)

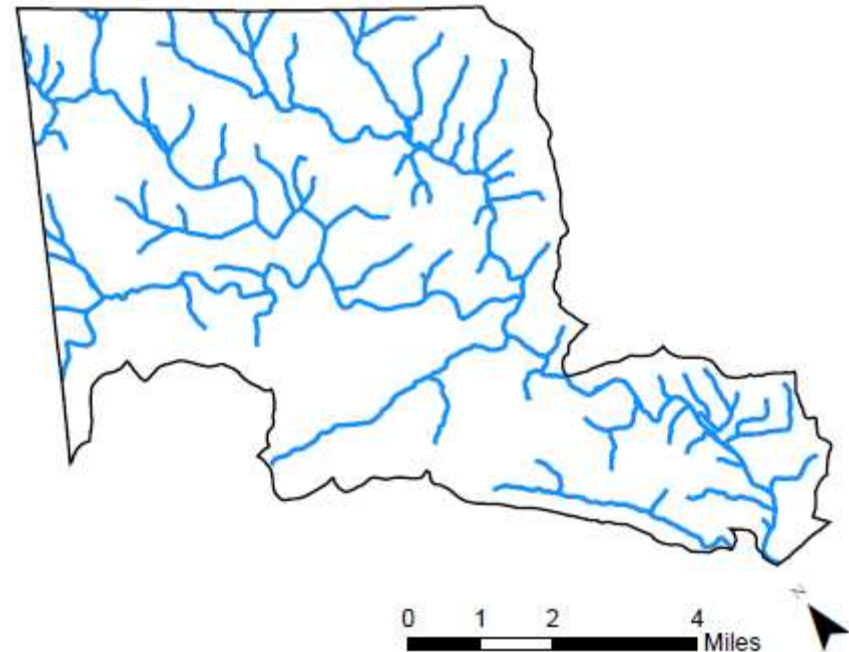
Portions of the Perkiomen Creek watershed are impaired by excess nutrients, erosion and sediment from agricultural and small residential development nonpoint sources and municipal point sources. [tell me more](#)

## Major Tributaries

- Molasses Creek
- Hosensack Creek
- Macoby Creek
- Stony Run Creek
- Green Lane Reservoir
- Gosenhoppen Creek
- Deep Creek

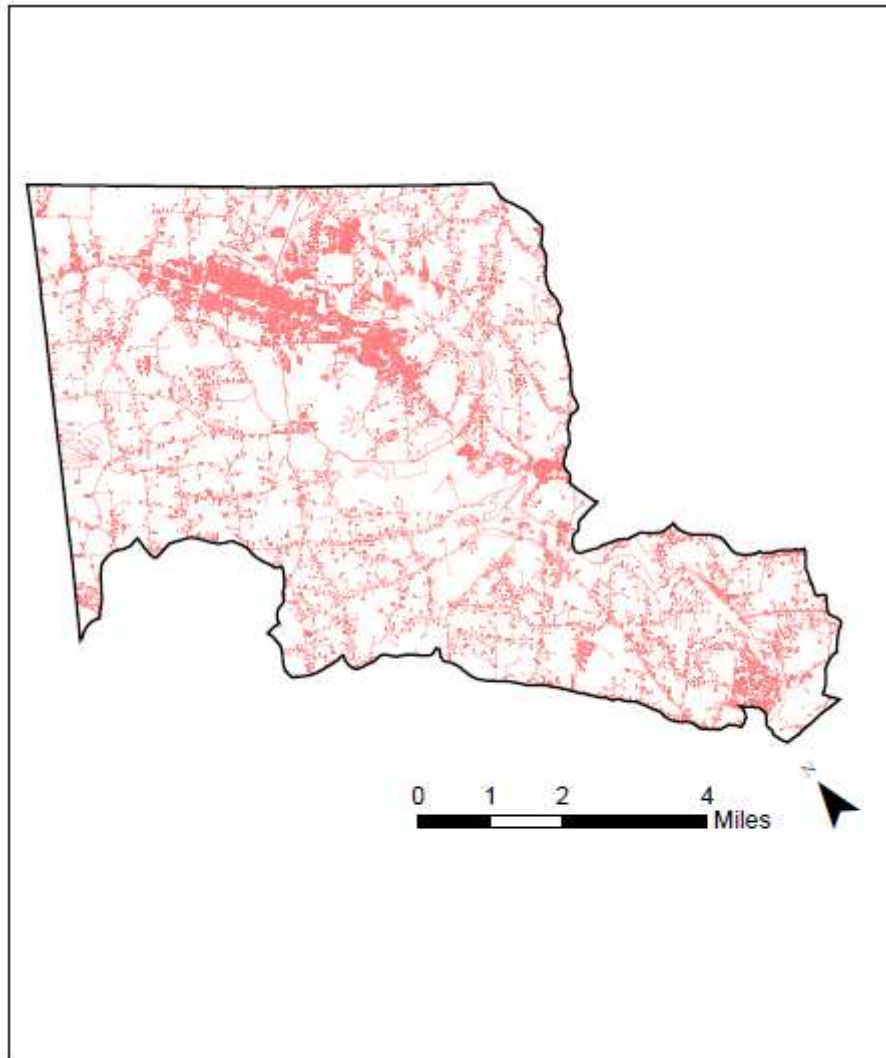
## Key Watershed Maps

### Major Waterbodies in Upper Perkiomen Creek Watershed Within Montgomery County



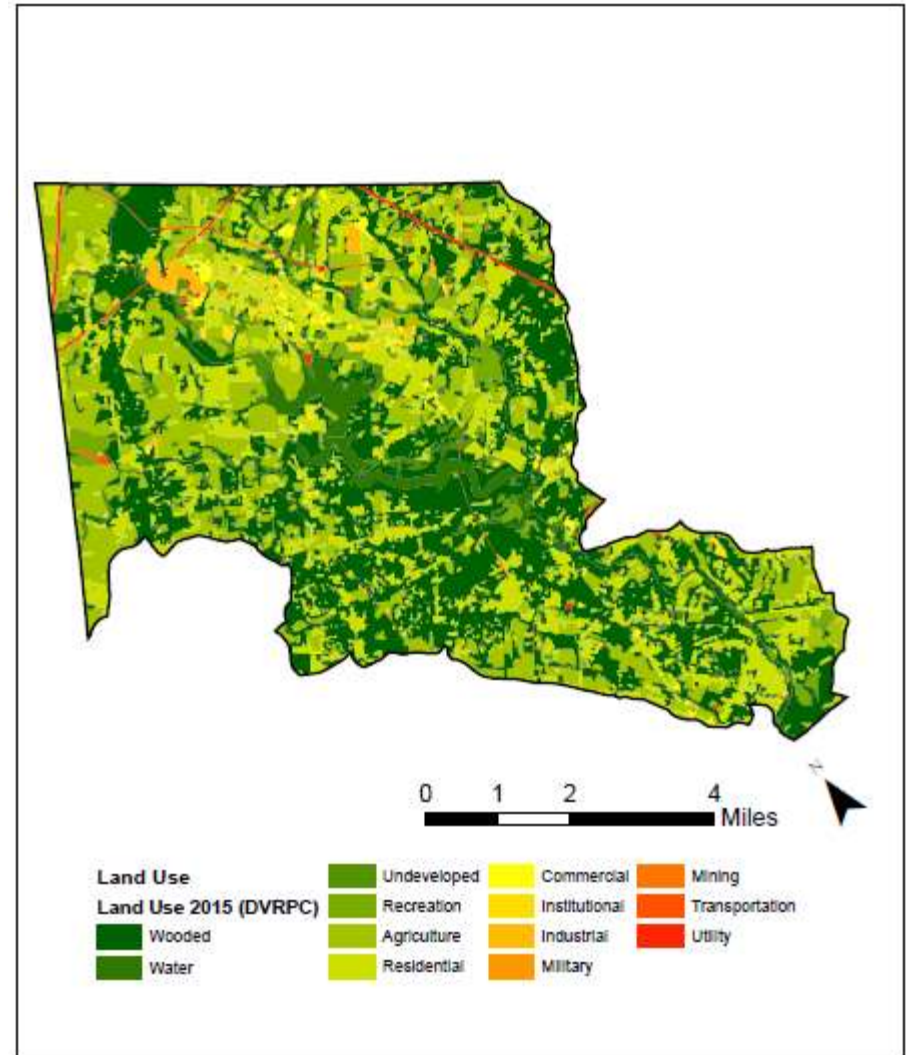
# UPPER PERKIOMEN CREEK WATERSHED

Impervious Surfaces In Upper Perkiomen Creek Watershed  
Within Montgomery County



Data Source: DVRPC 2015 Impervious Surface – Montgomery County, PA

Land Use In Upper Perkiomen Creek Watershed Within  
Montgomery County



Data Source: DVRPC 2015 Land Use – Montgomery County, PA

