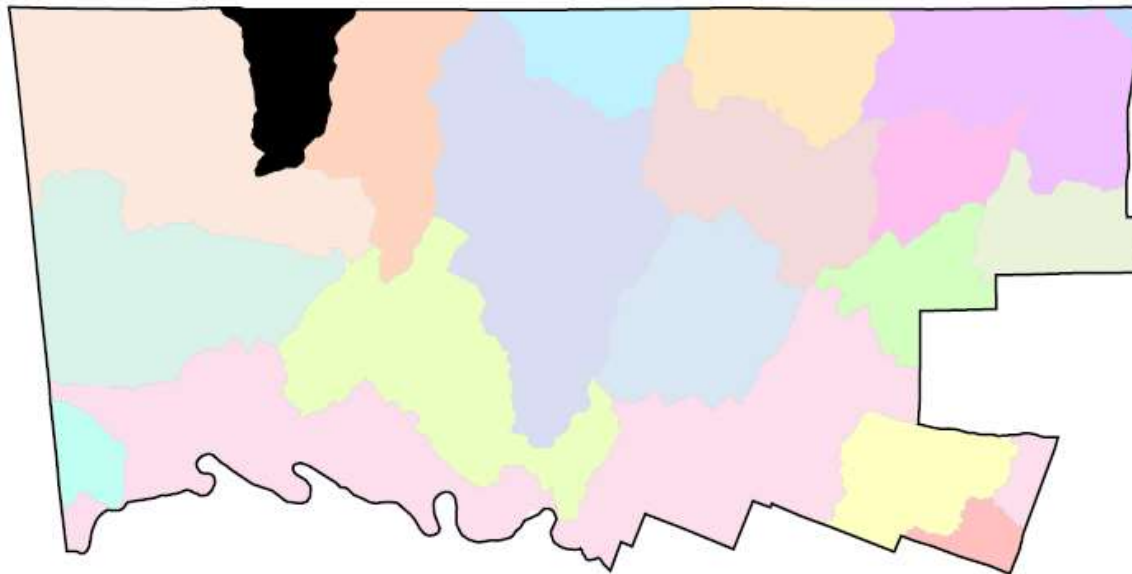


# UNAMI/RIDGE VALLEY CREEK WATERSHED

The Unami/Ridge Valley Creek watershed area within the County lies within the larger Perkiomen Creek watershed.

The Unami/Ridge Valley Creek watershed joins the Perkiomen Creek near Perkiomenville in Montgomery County.

The Unami/Ridge Valley Creek watershed covers an area of 48.8 square miles, and is comprised of municipalities in Montgomery and Bucks counties.



---

## Watershed Area (In County):

7,492.00 acres

## Stream Length (In County):

21.00 miles

## 2015 Impervious Cover (In County):

414.00 acres; 6%

---

### Contributing Municipalities

- Marlborough
- Salford
- Upper Salford
- Green Lane

### Associated Organizations & Agencies



# UNAMI/RIDGE VALLEY CREEK WATERSHED

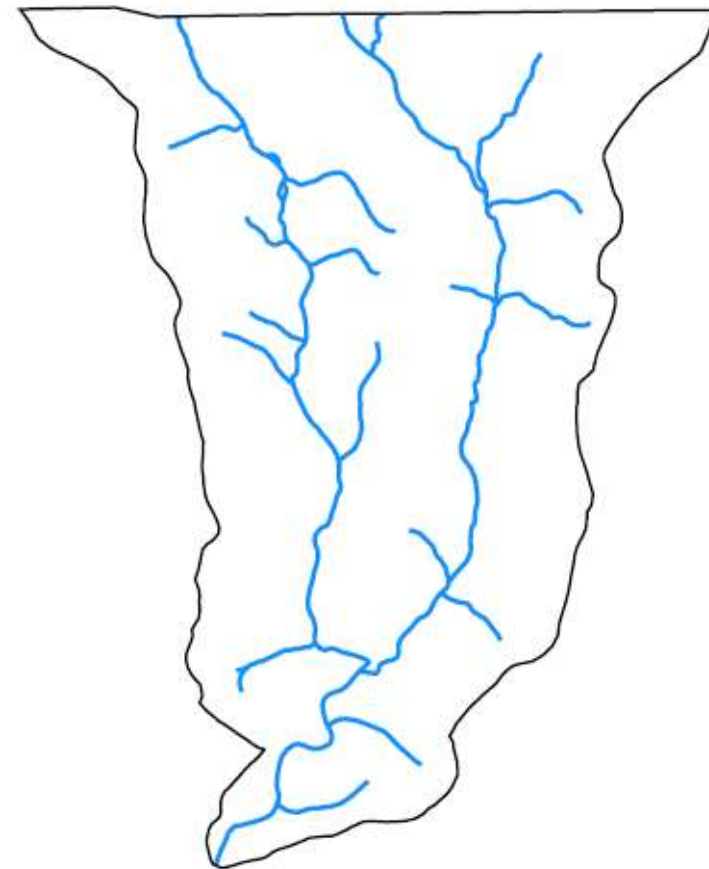
## Key Watershed Documents

An Act 167 Stormwater Management Plan was completed for the Perkiomen Creek Watershed in 2009 under the leadership of the Lehigh Valley Planning Commission. [tell me more](#)

Portions of the Perkiomen Creek watershed are impaired by excess nutrients, erosion and sediment from agricultural and small residential development nonpoint sources and municipal point sources. [tell me more](#)

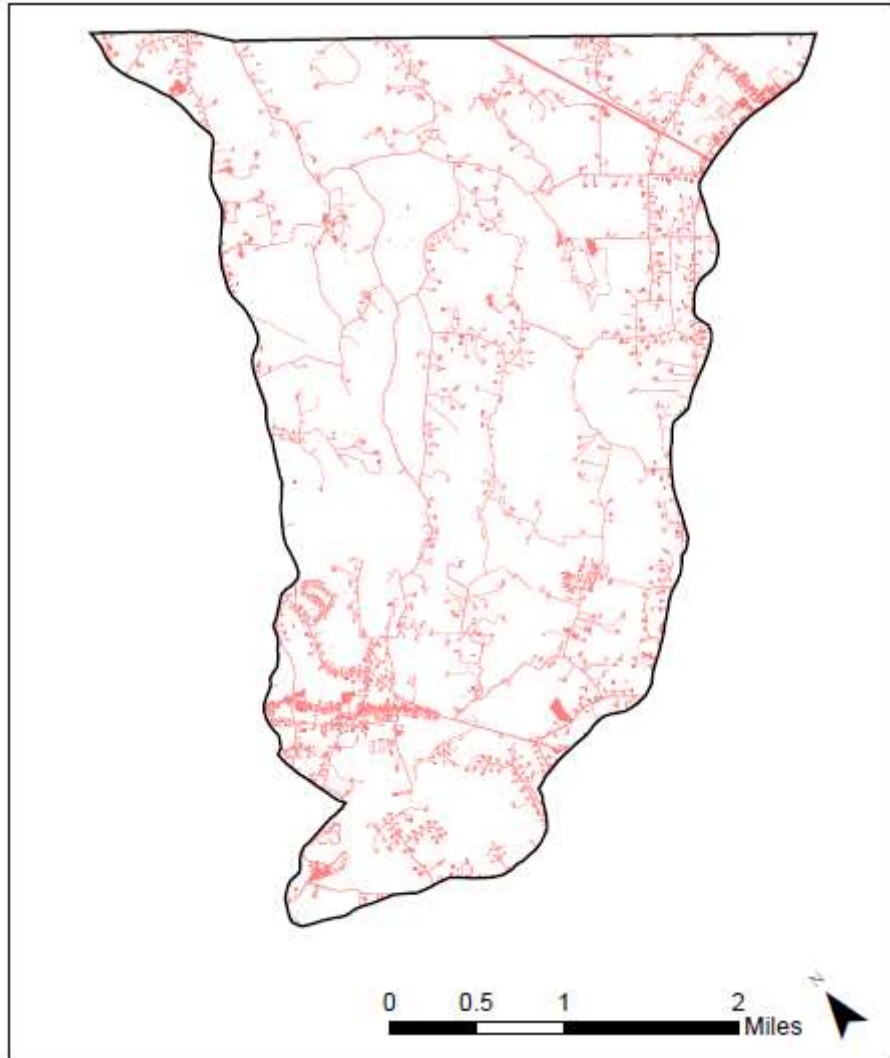
## Key Watershed Maps

Major Waterbodies in Unami/Ridge Valley Creek Watershed Within Montgomery County

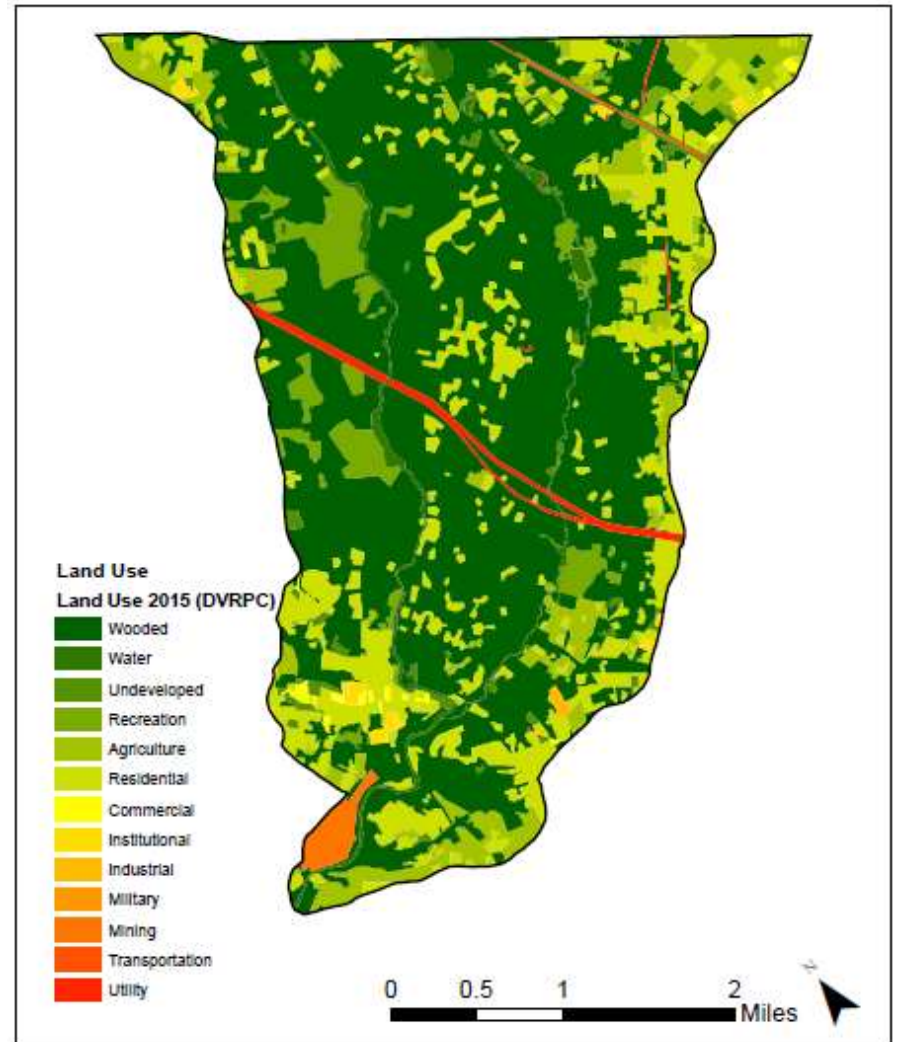


# UNAMI/RIDGE VALLEY CREEK WATERSHED

Impervious Surfaces In Unami/Ridge Valley Creek Watershed Within Montgomery County



Land Use In Unami/Ridge Valley Creek Watershed Within Montgomery County



Data Source: DVRPC 2015 Impervious Surface – Montgomery County, PA

Data Source: DVRPC 2015 Land Use – Montgomery County, PA

