

TOOKANY CREEK WATERSHED

The Tookany Creek watershed area within the County lies within the larger Tookany/Tacony-Frankford Creek watershed.

The Tookany/Tacony-Frankford Creek watershed covers a much larger area of 33 square miles, and is comprised of five (5) municipalities in Montgomery and Philadelphia counties.



Watershed Area (In County):

8,738.00 acres

Stream Length (In County):

20.00 miles

2015 Impervious Cover (In County):

3,038.00 acres; 35%

Contributing Municipalities

- Abington Township
- Springfield Township
- Cheltenham Township
- Jenkintown Borough
- Rockledge Borough

Associated Organizations & Agencies



Tookany/Tacony-Frankford
Watershed Partnership, Inc.



TOOKANY CREEK WATERSHED

Key Watershed Documents

An Act 167 Stormwater Management Plan was completed for the Tookany/Tacony-Frankford Watershed in 2008 by Borton-Lawson Engineering, Inc. and CDM, Inc. [tell me more](#)

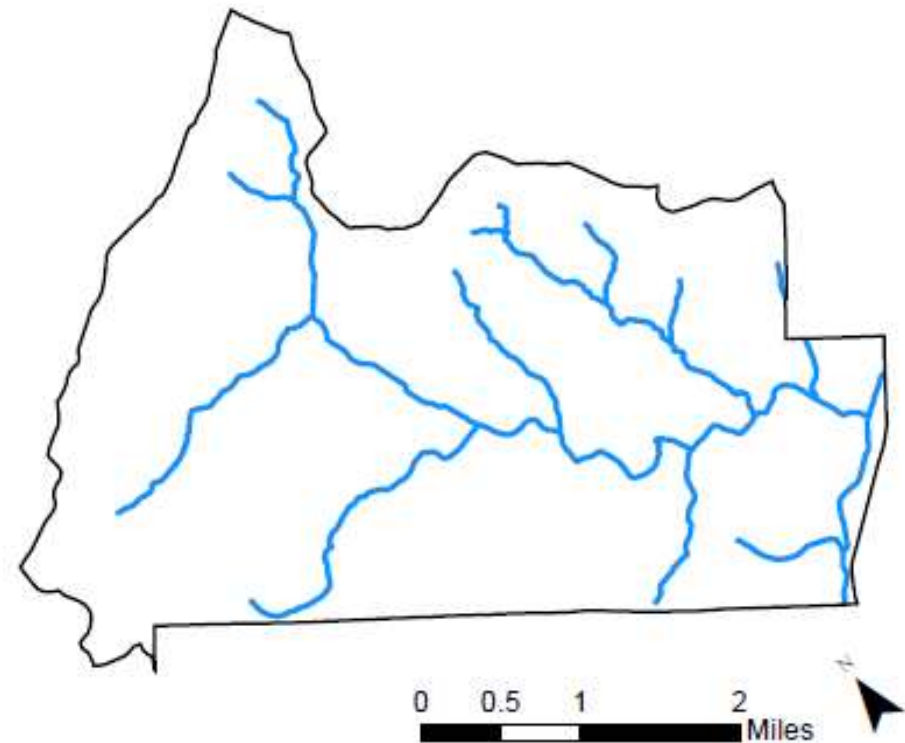
A Tookany Creek Watershed is listed as impaired/non-attaining in relation to urban runoff/storm sewers. [tell me more](#)

Major Tributaries

- Rock Creek
- Leech's Run
- Shoemaker Run
- Shady Nook Creek
- Brookwood Run
- Milltown Creek
- Jenkintown Creek
- Burholme Creek
- Mill Run

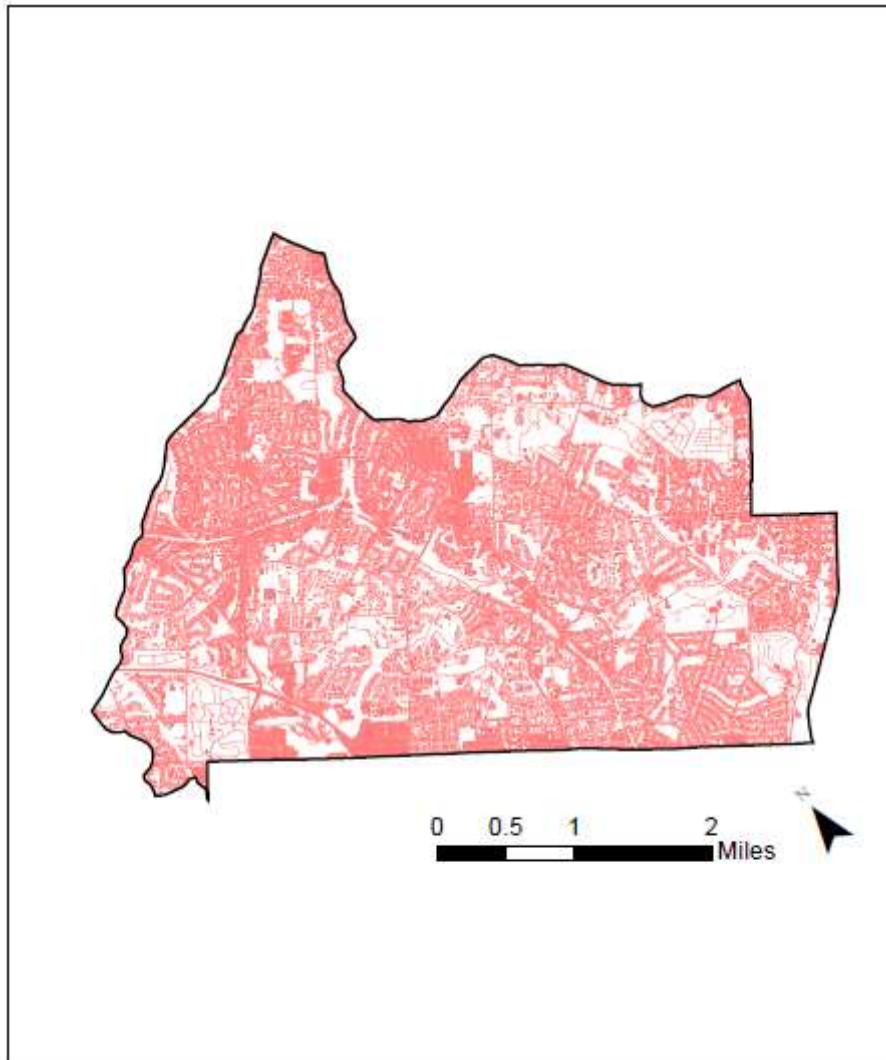
Key Watershed Maps

Major Waterbodies in Tookany Creek Watershed
Within Montgomery County

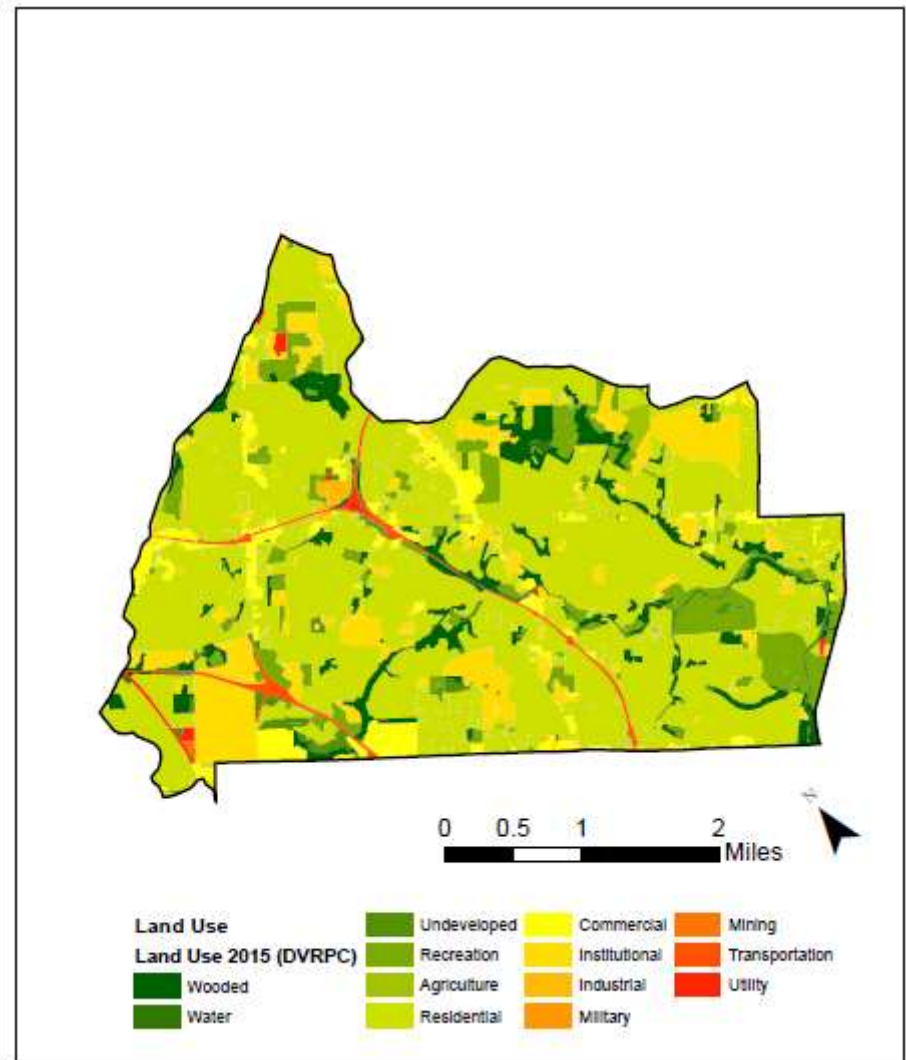


TOOKANY CREEK WATERSHED

Impervious Surfaces In Tookany Creek Watershed
Within Montgomery County



Land Use In Tookany Creek Watershed Within
Montgomery County



Data Source: DVRPC 2015 Impervious Surface – Montgomery County, PA

Data Source: DVRPC 2015 Land Use – Montgomery County, PA

