

# SWAMP CREEK WATERSHED

The Swamp Creek watershed area within the County lies within the larger Perkiomen Creek watershed.

The Swamp Creek joins the Perkiomen Creek north of Schwenksville in Montgomery County.

The Swamp Creek watershed covers an area of 55.4 square miles, and is comprised of municipalities in Montgomery and Berks counties.



---

**Watershed Area (In County):**

24,554.00 acres

**Stream Length (In County):**

62.00 miles

**2015 Impervious Cover (In County):**

2,171.00 acres; 9%

---

## Contributing Municipalities

- Douglass Township
- New Hanover Township
- Upper Frederick Township
- Lower Frederick Township
- Upper Pottsgrove Township
- Lower Pottsgrove Township
- Limerick Township
- Schwenksville Borough

## Associated Organizations & Agencies



# SWAMP CREEK WATERSHED

## Key Watershed Documents

An Act 167 Stormwater Management Plan was completed for the Swamp Creek Watershed in 2006. [tell me more](#)

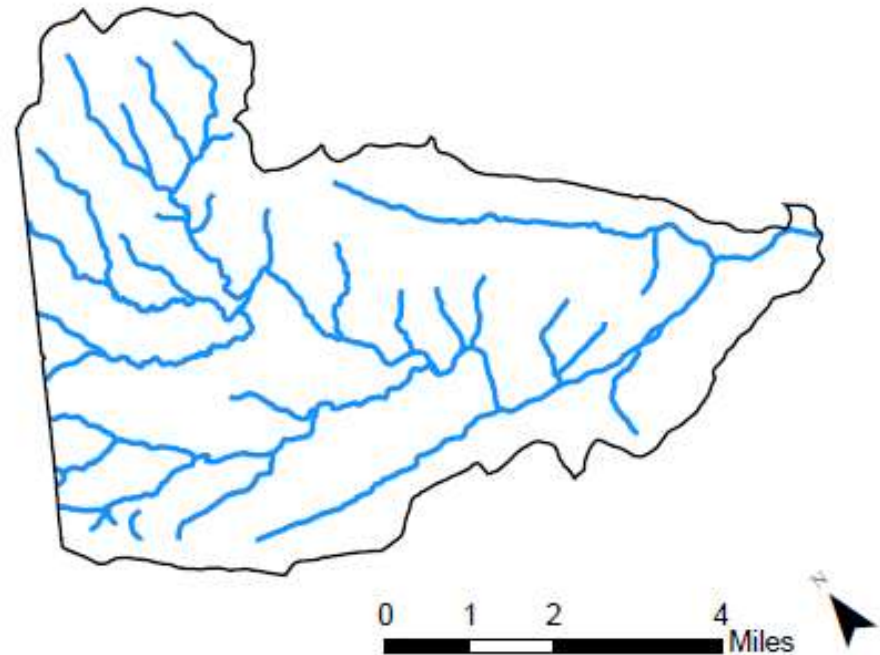
A Total Maximum Daily Load (TMDL) was established for the Poquessing Creek Watershed related to siltation, urban runoff/storm sewers, and unknown pathogens. [tell me more](#)

## Major Tributaries

- Middle Cree
- Schlegel Run
- Oley Creek
- Minister Creek
- Scioto Creek

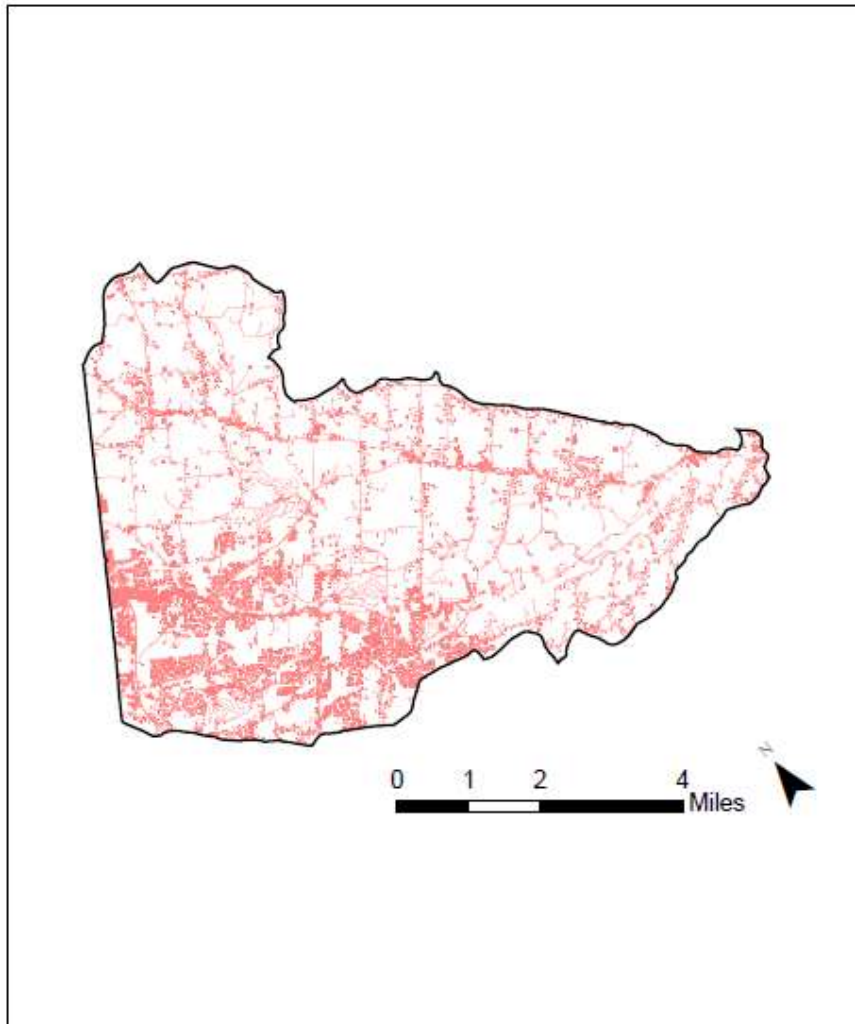
## Key Watershed Maps

Major Waterbodies in Swamp Creek Watershed  
Within Montgomery County

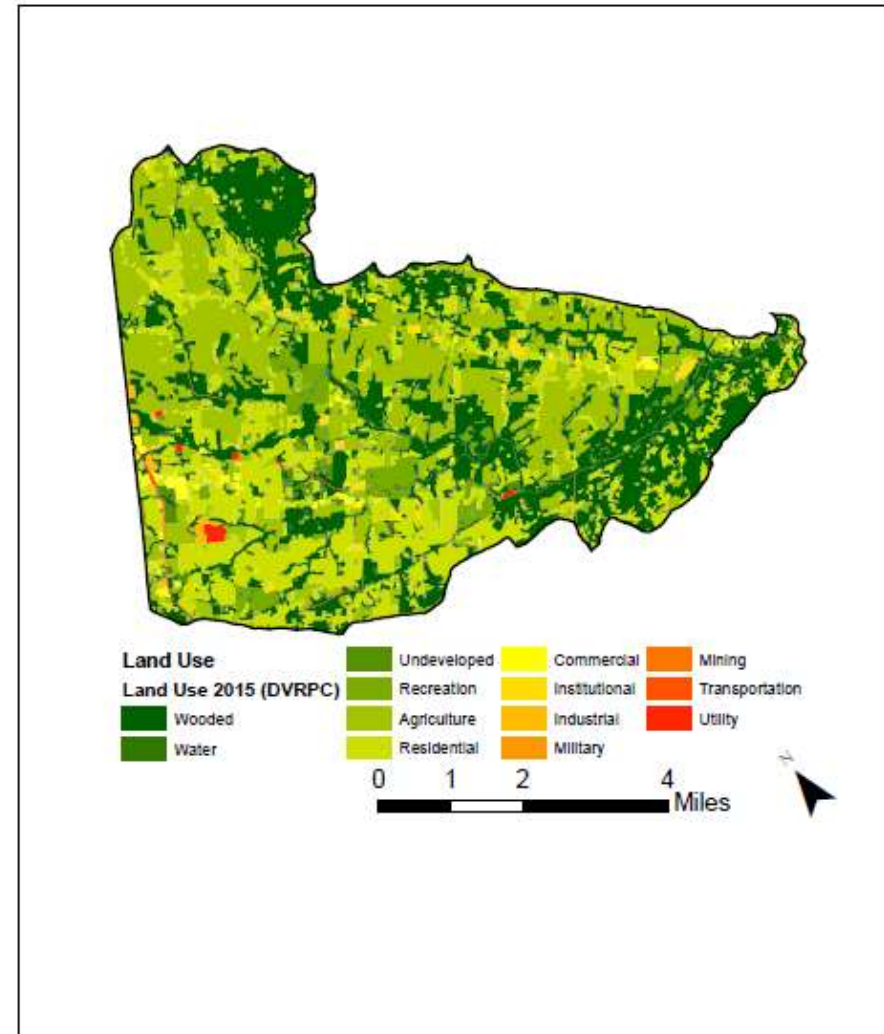


# SWAMP CREEK WATERSHED

Impervious Surfaces In Swamp Creek Watershed Within Montgomery County



Land Use In Swamp Creek Watershed Within Montgomery County



Data Source: DVRPC 2015 Impervious Surface – Montgomery County, PA

Data Source: DVRPC 2015 Land Use – Montgomery County, PA

