

STONY CREEK SAWMILL RUN WATERSHED

The entire Stony Creek Sawmill Run watershed lies within Montgomery County.

The Stony Creek Sawmill Run watershed is located within the Schuylkill River watershed.

The river's watershed is almost 2,000 square miles and parts of eleven counties.



Watershed Area (In County):

16,339.00 acres

Stream Length (In County):

39.00 miles

2015 Impervious Cover (In County):

4,563.00 acres; 28%

Contributing Municipalities

- Worcester Township
- Lower Providence Township
- Whitpain Township
- East Norriton Township
- West Norriton Township
- Plymouth Township
- Norristown Borough

Associated Organizations & Agencies



STONY CREEK SAWMILL RUN WATERSHED

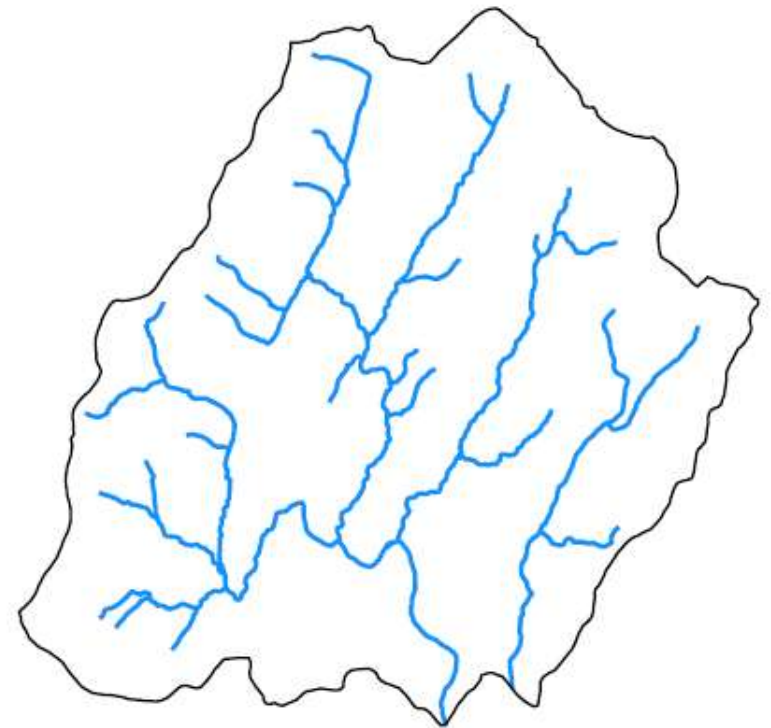
Key Watershed Documents

An Act 167 Stormwater Management Plan was completed for the Stony Creek Sawmill Run Watershed in 1992 under the leadership of the Montgomery County Planning Commission. [tell me more](#)

A Pollutant Reduction Plan (PRP) was established for the Stony Creek Sawmill Run Watershed related to siltation and nutrients. [tell me more](#)

Key Watershed Maps

Major Waterbodies in Stony Creek Sawmill Run Watershed Within Montgomery County

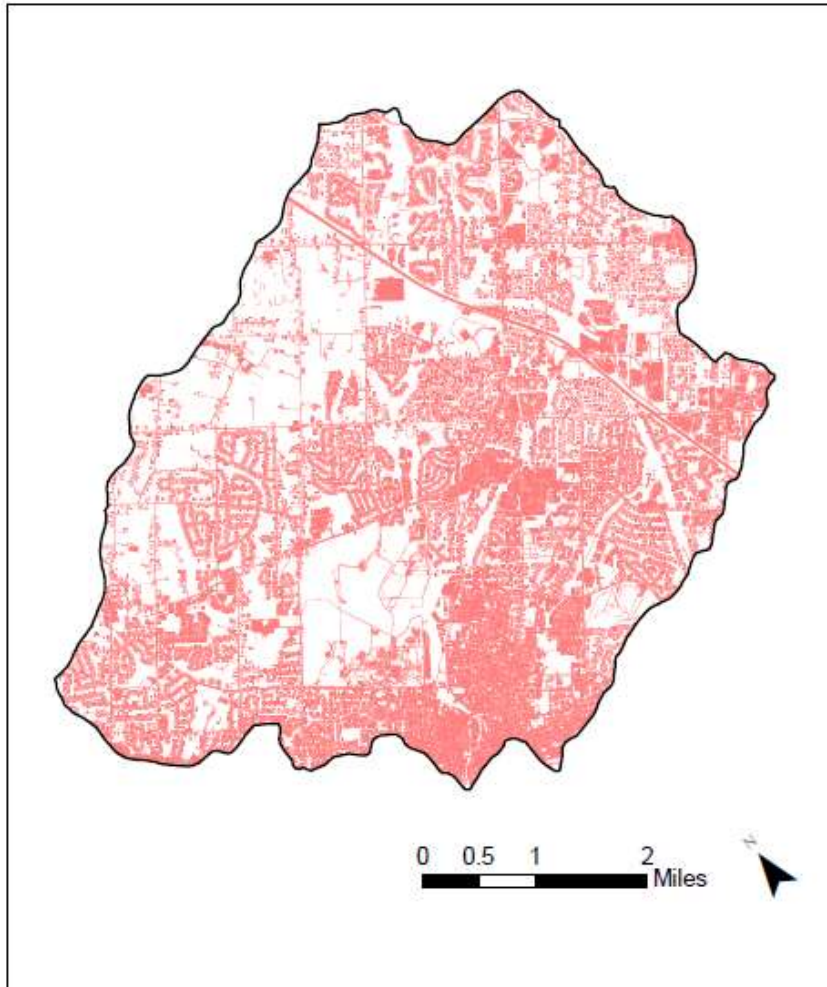


0 0.5 1 2 Miles

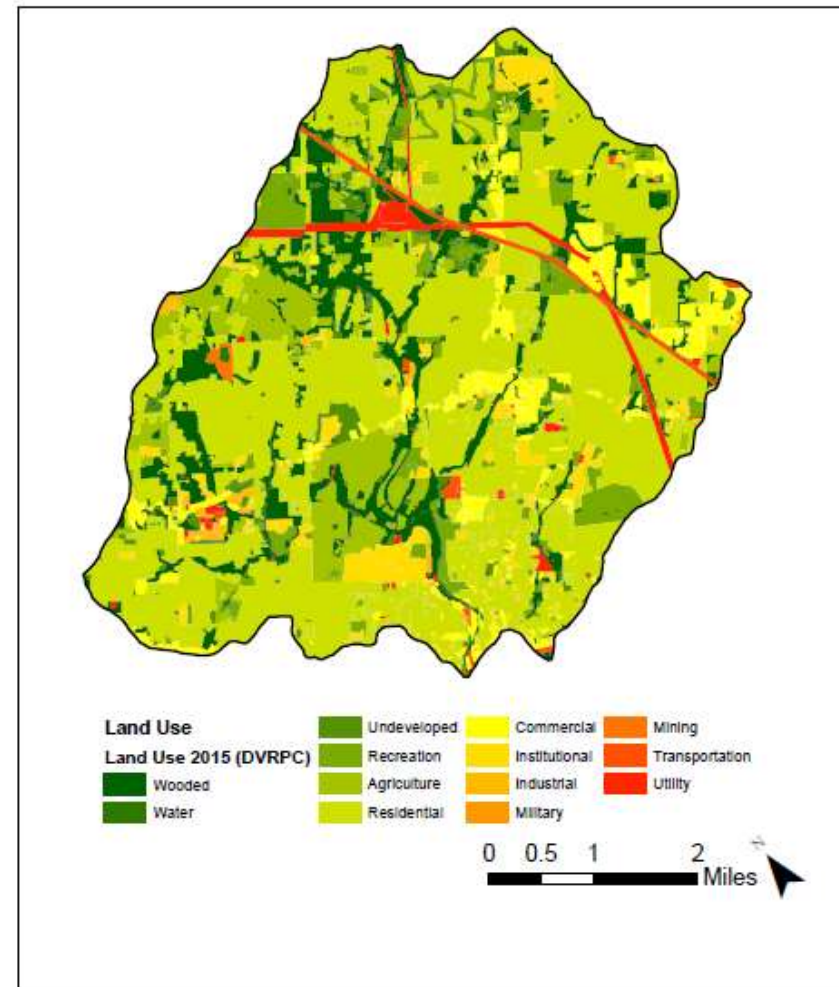


STONY CREEK SAWMILL RUN WATERSHED

Impervious Surfaces In Stony Creek Sawmill Run Watershed Within Montgomery County



Land Use In Stony Creek Sawmill Run Watershed Within Montgomery County



Data Source: DVRPC 2015 Impervious Surface – Montgomery County, PA

Data Source: DVRPC 2015 Land Use – Montgomery County, PA

