

SKIPPACK CREEK WATERSHED

The Skippack Creek watershed area within the County lies within the larger Perkiomen Creek watershed.

The Skippack Creek joins the Perkiomen Creek within Lower Providence in Montgomery County.

The Skippack watershed covers an area of 55.8 square miles, and is comprised of municipalities in Montgomery and Bucks counties.



Watershed Area (In County):

35,645.00 acres

Stream Length (In County):

123.00 miles

2015 Impervious Cover (In County):

6,327.00 acres; 18%

Contributing Municipalities

- Franconia Township
- Telford Borough
- Souderton Borough
- Hatfield Township
- Lower Salford Township
- Towamencin Township
- Lansdale Borough
- Skippack Township
- Upper Gwynedd Township
- Worcester Township
- Lower Providence Township

Associated Organizations & Agencies



SKIPPACK CREEK WATERSHED

Key Watershed Documents

An Act 167 Stormwater Management Plan was completed for the Perkiomen Creek Watershed in 2009 under the leadership of the Lehigh Valley Planning Commission. [tell me more](#)

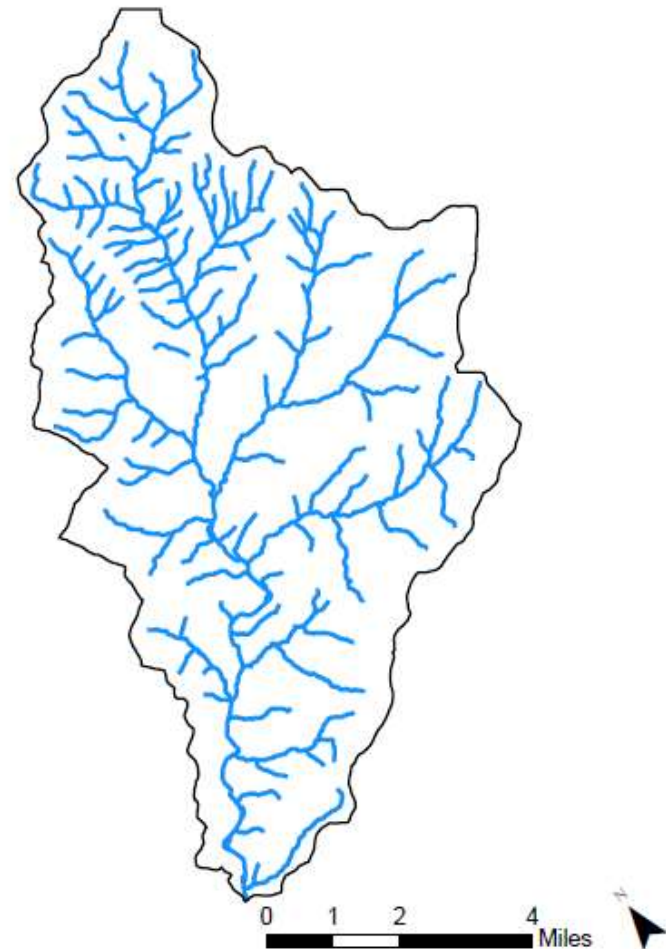
A Total Maximum Daily Load (TMDL) was established for the Skippack Creek Watershed related to sediments and phosphorous. [tell me more](#)

Major Tributaries

- Rock Run
- Eagleville Run
- Zacharias Creek
- Towamencin Creek

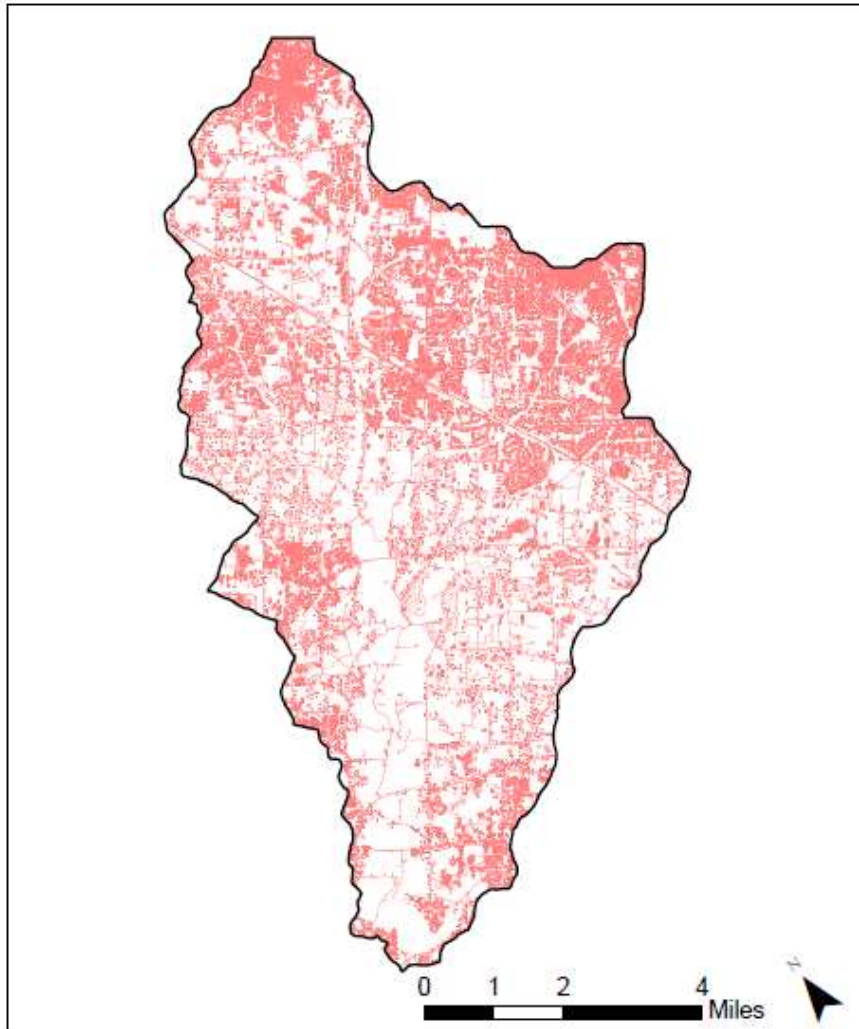
Key Watershed Maps

Major Waterbodies in Skippack Creek Watershed
Within Montgomery County

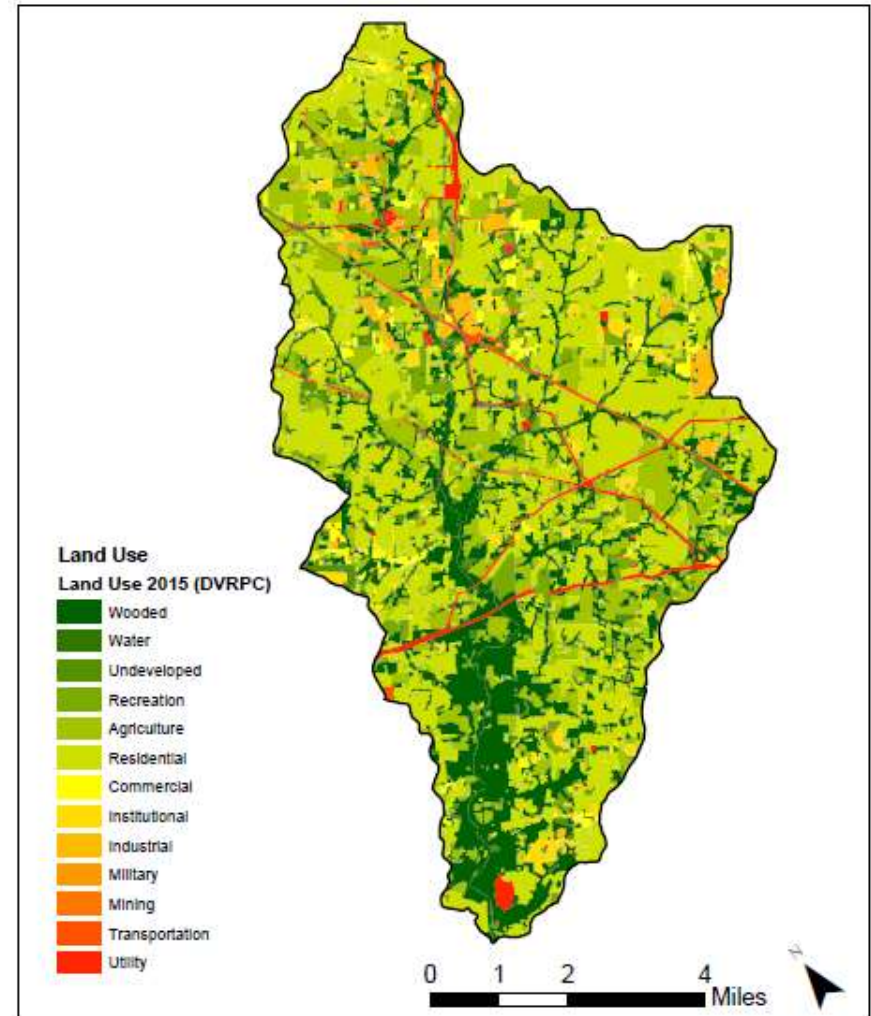


SKIPPACK CREEK WATERSHED

Impervious Surfaces In Skippack Creek Watershed
Within Montgomery County



Land Use In Skippack Creek Watershed Within
Montgomery County



Data Source: DVRPC 2015 Impervious Surface – Montgomery County, PA

Data Source: DVRPC 2015 Land Use – Montgomery County, PA

