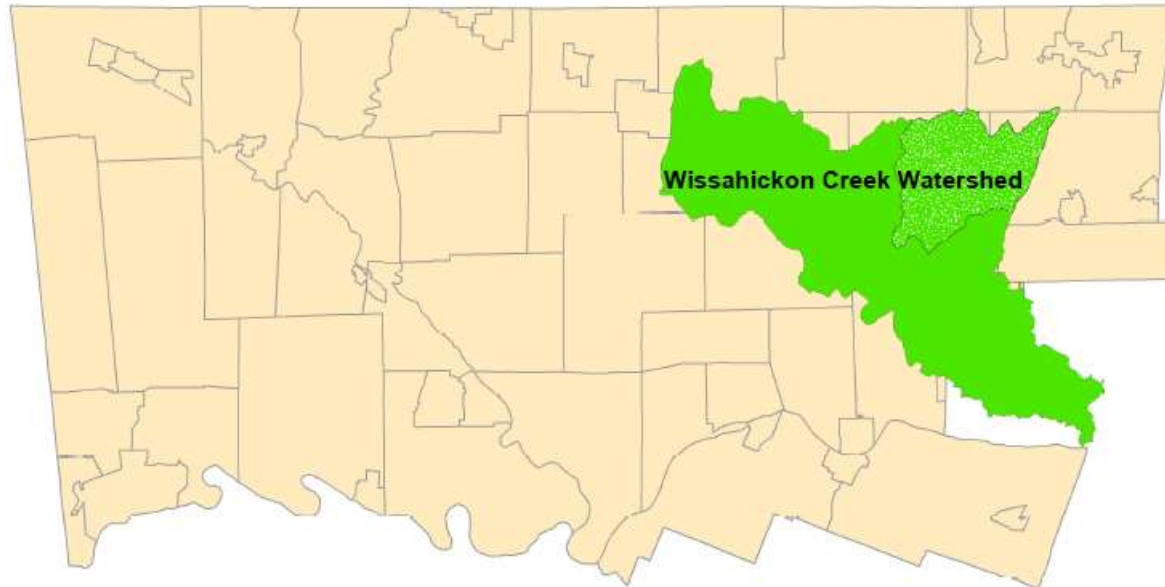


# SANDY RUN WATERSHED

The Sandy Run watershed lies within the larger Wissahickon Creek watershed.

The Wissahickon Creek watershed covers a much larger area of 64 square miles, and is comprised of fifteen (15) municipalities in Montgomery County and the City of Philadelphia.



---

**Watershed Area (In County):**

8,019.00 acres

**Stream Length (In County):**

18.00 miles

**2015 Impervious Cover (In County):**

2,367.00 acres; 30%

---

## Contributing Municipalities

- Whitemarsh Township
- Springfield Township
- Upper Dublin Township
- Horsham Township
- Upper Moreland Township
- Abington Township

## Major Tributaries

- Pine Run

## Associated Organizations & Agencies



# SANDY RUN WATERSHED

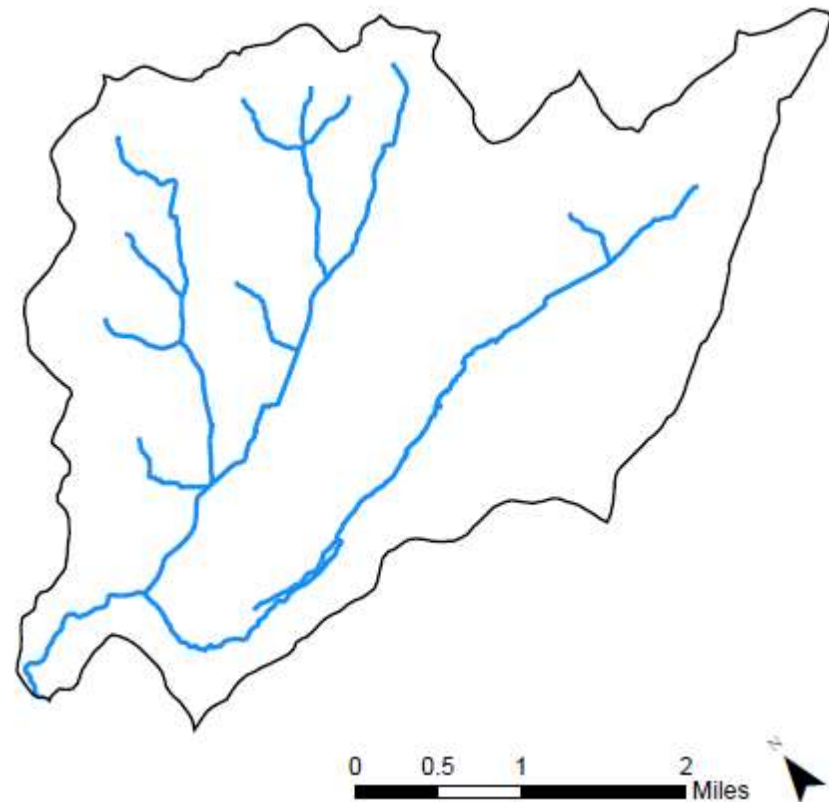
## Key Watershed Documents

An Act 167 Stormwater Management Plan was completed for the Wissahickon Creek Watershed in 2014 under the leadership of the Center of Sustainable Communities at Temple University and NTM Engineering. [tell me more](#)

A draft Total Maximum Daily Load (TMDL) was established in May 2015 for the Wissahickon Creek Watershed related to phosphorous. In response the Wissahickon Watershed communities established a partnership and development the Wissahickon Water Quality Improvement Plan submitted to EPA/DEP in September 2019. [tell me more](#)

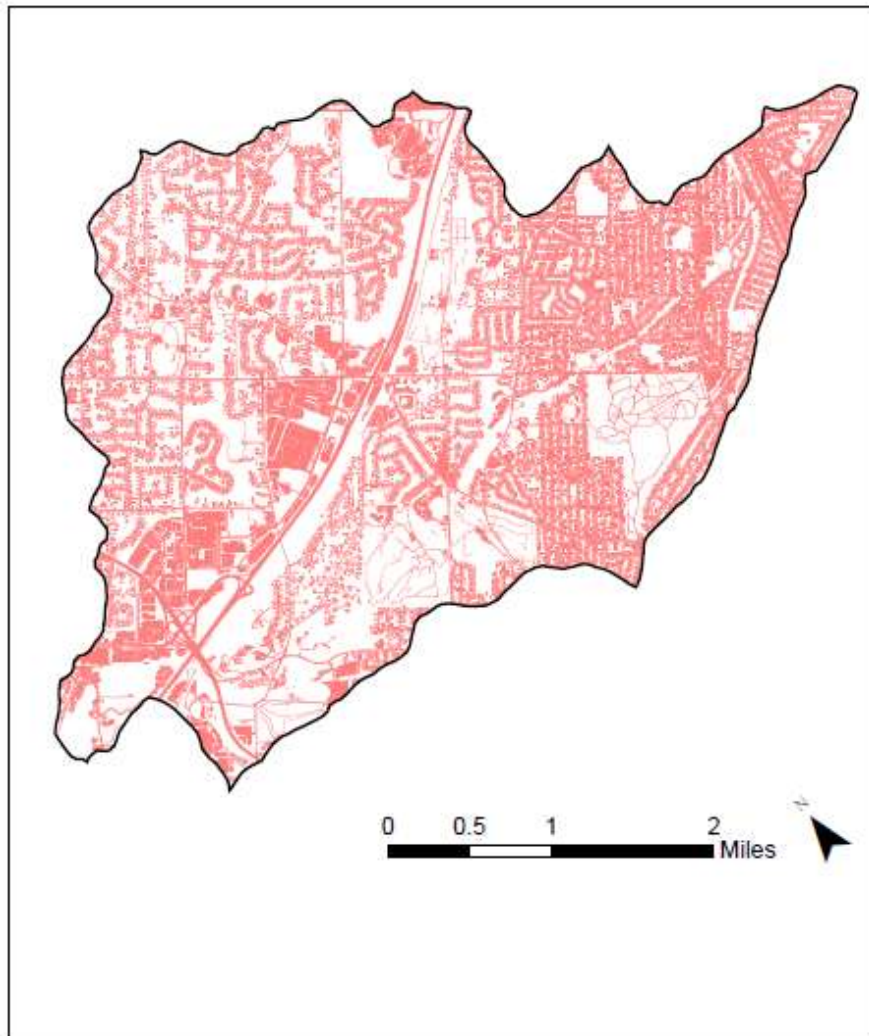
## Key Watershed Maps

Major Waterbodies in Sandy Run Watershed Within Montgomery County

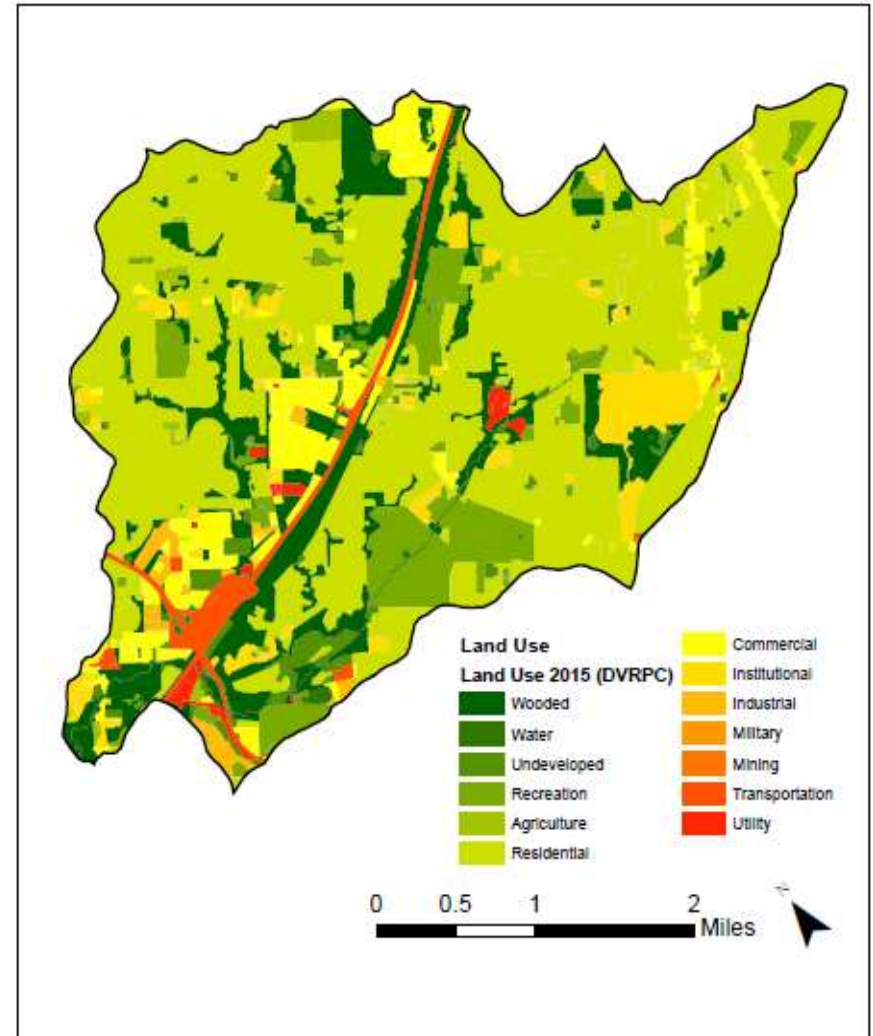


# SANDY RUN WATERSHED

Impervious Surfaces In Sandy Run Watershed Within Montgomery County



Land Use In Sandy Run Watershed Within Montgomery County



Data Source: DVRPC 2015 Impervious Surface – Montgomery County, PA

Data Source: DVRPC 2015 Land Use – Montgomery County, PA

