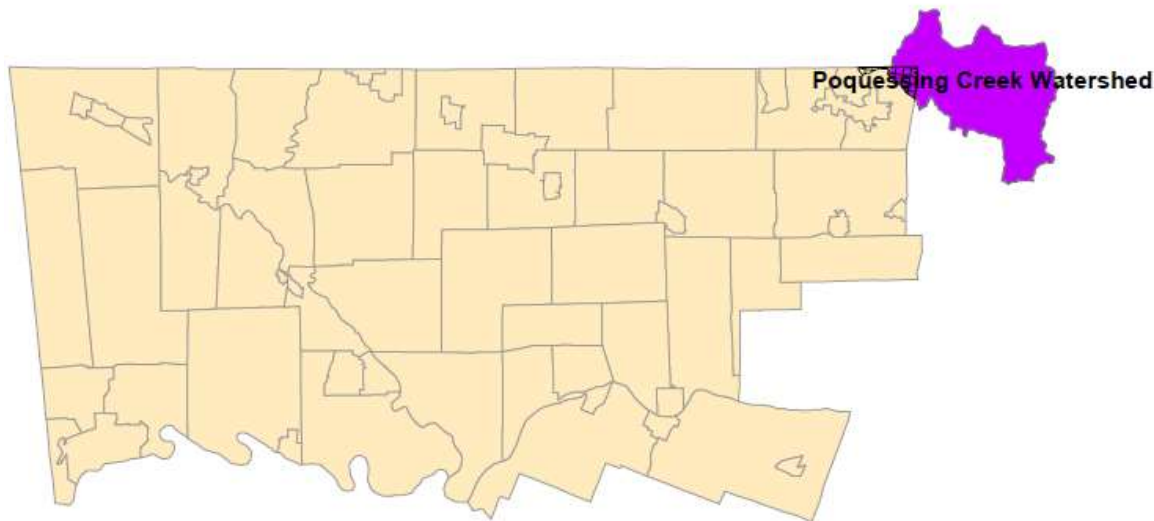


POQUESSING CREEK WATERSHED

The Poquessing Creek watershed in Montgomery County lies within the larger Poquessing watershed.

The Poquessing Creek watershed covers more than 22 miles within 4 municipalities in Bucks, Montgomery and Philadelphia counties.



Watershed Area (In County):

652.00 acres

Stream Length (In County):

1.00 miles

2015 Impervious Cover (In County):

186.00 acres; 29%

Contributing Municipalities

- Lower Moreland Township

Associated Organizations & Agencies

Friends of Poquessing Watershed



POQUESSING CREEK WATERSHED

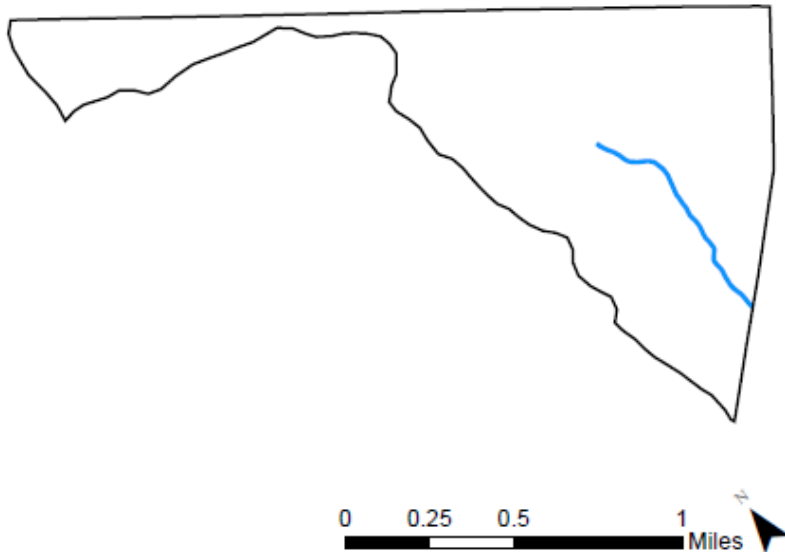
Key Watershed Documents

An Act 167 Stormwater Management Plan was completed for the Poquessing Creek Watershed in 2012 under the leadership of the NTM Engineering, Inc. [tell me more](#)

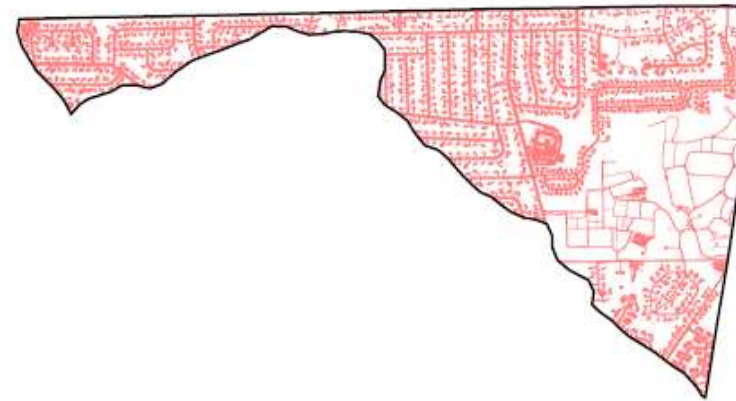
A Total Maximum Daily Load (TMDL) was established for the Poquessing Creek Watershed related to algal growth and siltation. [tell me more](#)

Key Watershed Maps

Major Waterbodies in Poquessing Creek Watershed Within Montgomery County

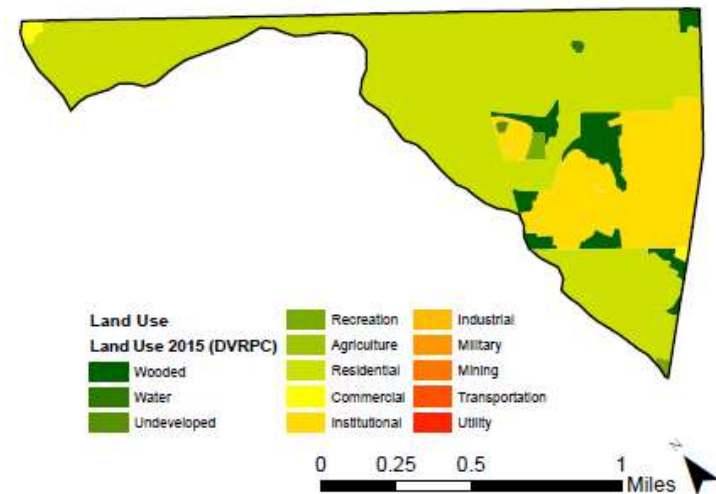


Impervious Surfaces In Poquessing Creek Watershed Within Montgomery County



Data Source: DVRPC 2015 Impervious Surface – Montgomery County, PA

Land Use In Poquessing Creek Watershed Within Montgomery County



Data Source: DVRPC 2015 Land Use – Montgomery County, PA



POQUESSING CREEK WATERSHED

