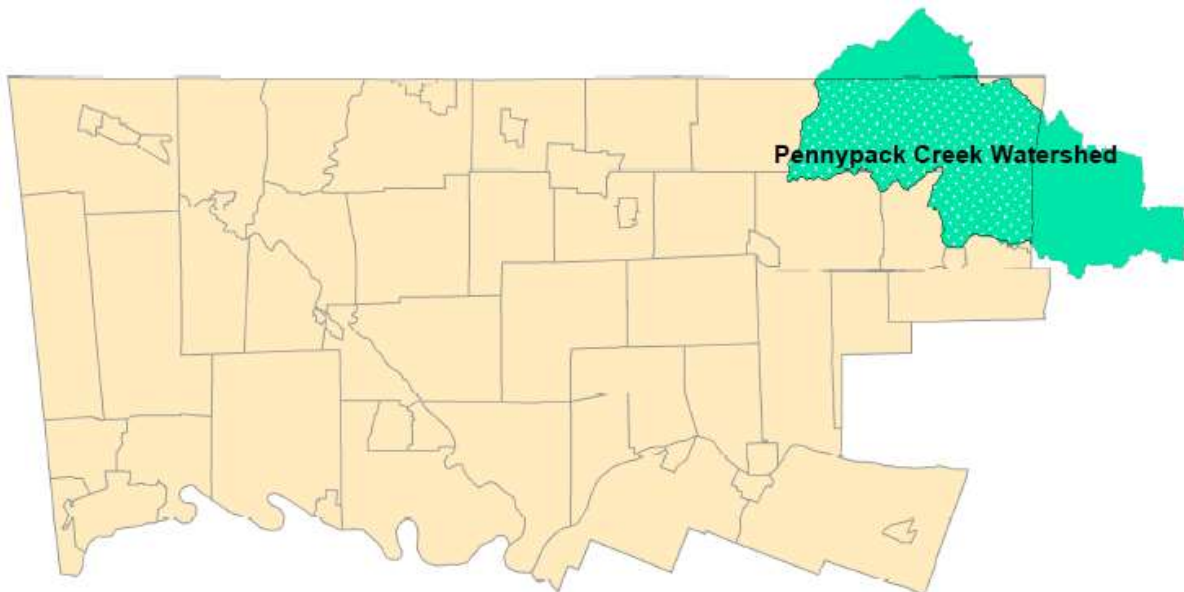


PENNYPACK CREEK WATERSHED

The Pennypack Creek watershed in Montgomery County lies within the larger Pennypack watershed.

The Pennypack Creek watershed covers a much larger area of 56 miles within 12 municipalities in Bucks, Montgomery and Philadelphia counties.



Watershed Area (In County):

20,367.00 acres

Stream Length (In County):

50.00 miles

2015 Impervious Cover (In County):

6,028.00 acres; 30%

Contributing Municipalities

- Horsham Township
- Upper Moreland Township
- Hatboro Borough
- Upper Dublin Township
- Lower Moreland Township
- Bryn Athyn Borough
- Abington Township
- Jenkintown Borough
- Rockledge Borough

Associated Organizations & Agencies



PENNYPACK CREEK WATERSHED

Key Watershed Documents

An Act 167 Stormwater Management Plan was completed for the Pennypack Creek Watershed in 2012 under the leadership of the Center of Sustainable Communities at Temple. [tell me more](#)

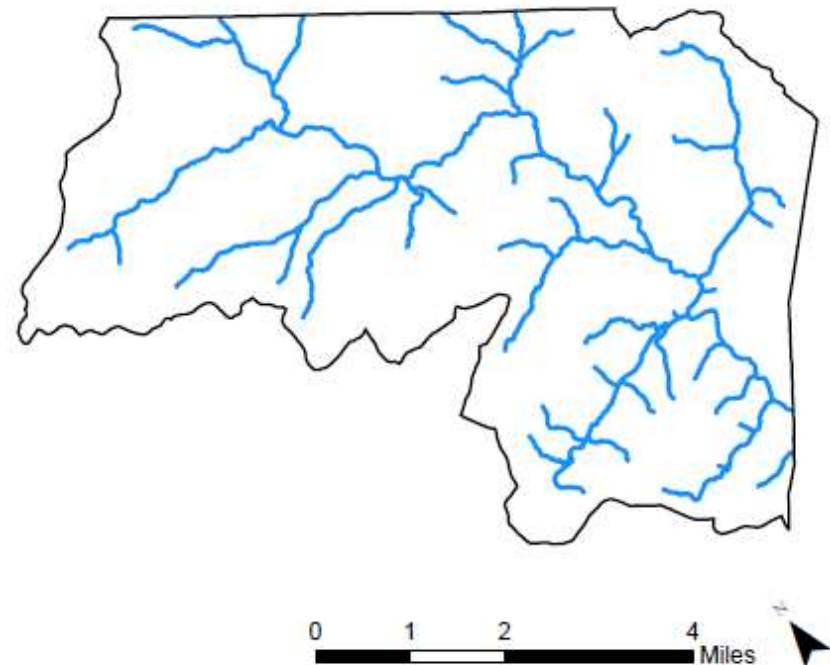
A Total Maximum Daily Load (TMDL) was established for the Pennypack Creek Watershed related to siltation and nutrients. [tell me more](#)

Major Tributaries

- Blair Mill Run
- Meadow Brook
- Robinhood Brook
- Huntingdon Valley Creek
- Southampton Creek
- Rockledge Brook

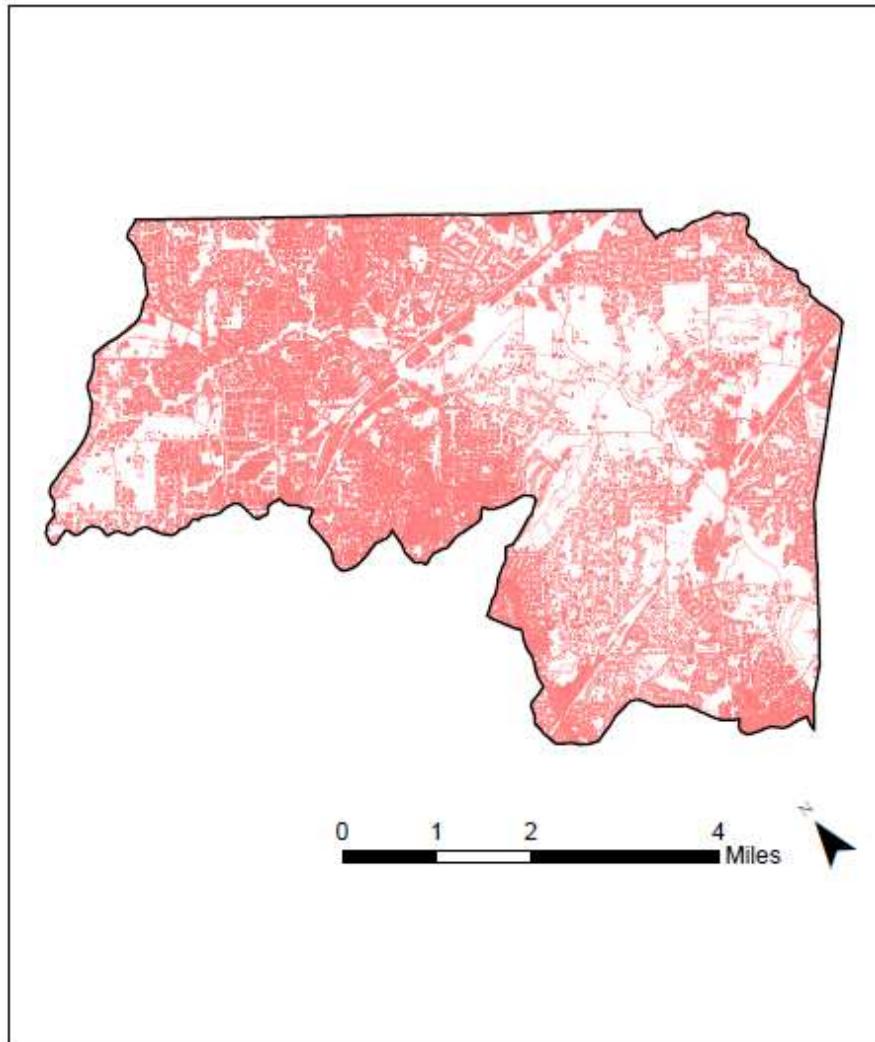
Key Watershed Maps

Major Waterbodies in Pennypack Creek Watershed Within Montgomery County

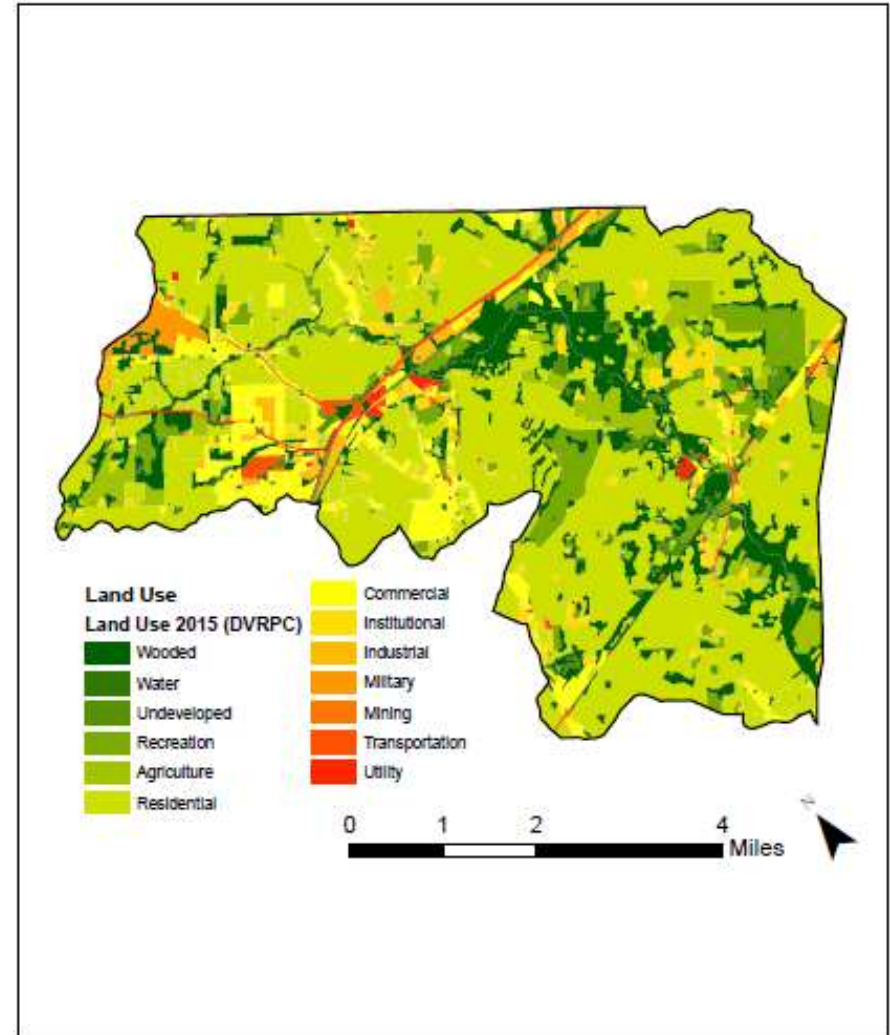


PENNYPACK CREEK WATERSHED

Impervious Surfaces In Pennypack Creek Watershed Within Montgomery County



Land Use In Pennypack Creek Watershed Within Montgomery County



Data Source: DVRPC 2015 Impervious Surface – Montgomery County, PA

Data Source: DVRPC 2015 Land Use – Montgomery County, PA

