

# MANATAWNY CREEK WATERSHED

The Manatawny Creek watershed area within the County lies within the larger Lower Manatawny Creek watershed.

The Lower Manatawny Creek watershed covers a larger area of 52 square miles, and is comprised of municipalities in Montgomery and Berks counties.



---

## Watershed Area (In County):

3,387.00 acres

## Stream Length (In County):

12.00 miles

## 2015 Impervious Cover (In County):

840.00 acres; 25%

---

## Associated Organizations & Agencies

### Contributing Municipalities

- Upper Pottsgrove Township
- West Pottsgrove Township
- Pottstown Borough

### Major Tributaries

- Goose Run

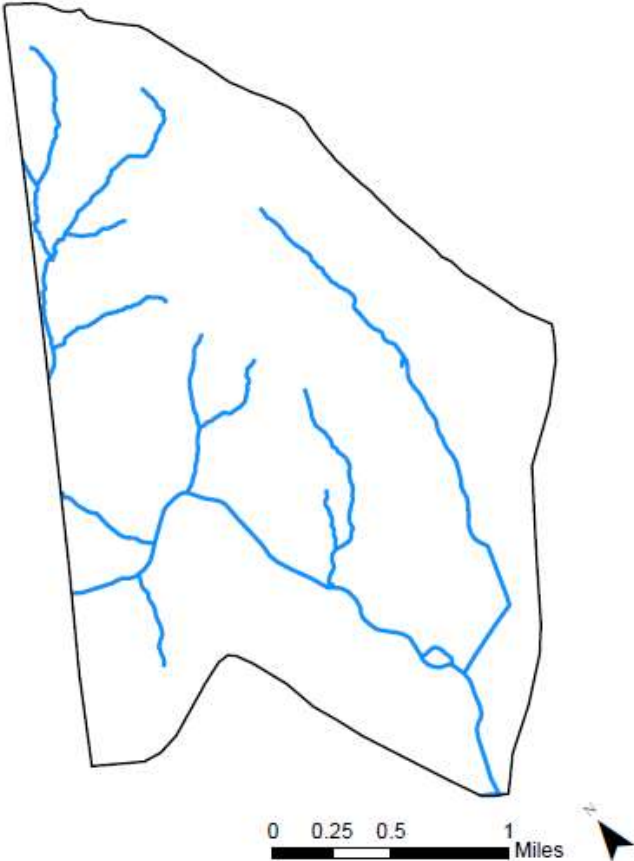


# MANATAWNY CREEK WATERSHED

Impervious Surfaces In Manatawny Creek Watershed Within Montgomery County

## Key Watershed Maps

Major Waterbodies in Manatawny Creek Watershed Within Montgomery County

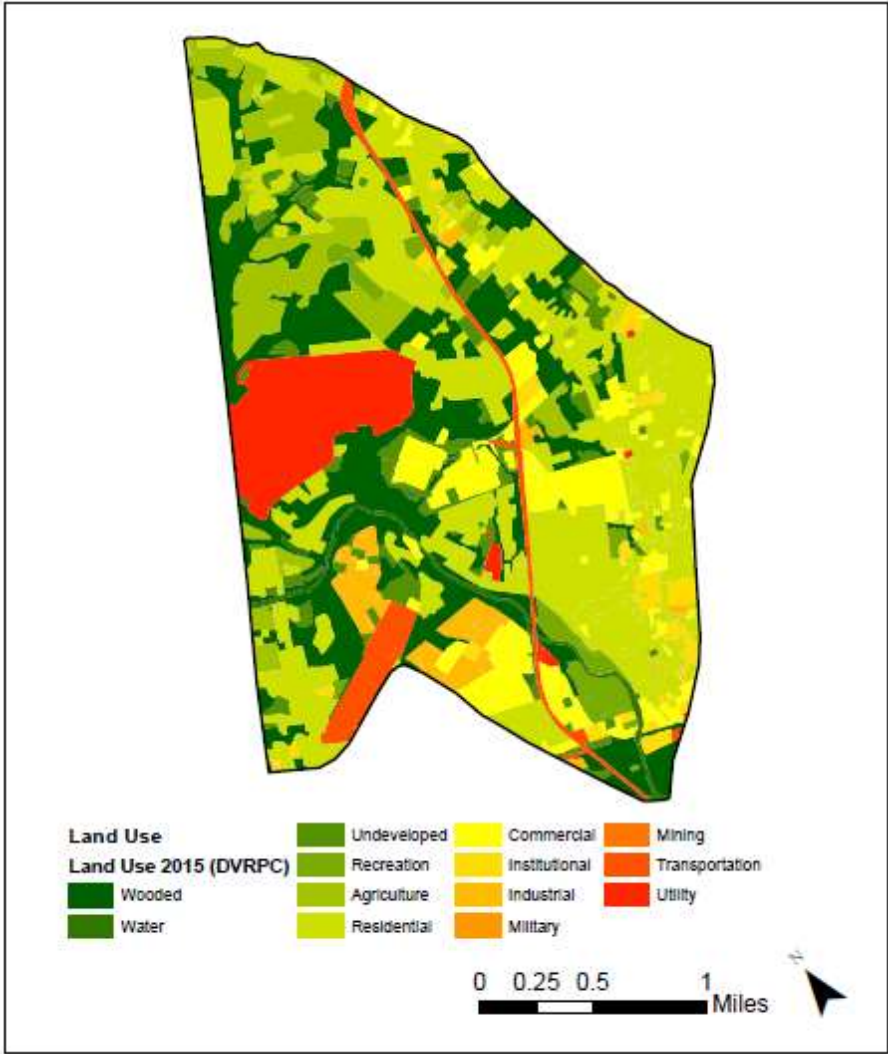


Data Source: DVRPC 2015 Impervious Surface – Montgomery County, PA



# MANATAWNY CREEK WATERSHED

Land Use In Manatawny Creek Watershed Within  
Montgomery County



Data Source: DVRPC 2015 Land Use – Montgomery County, PA

