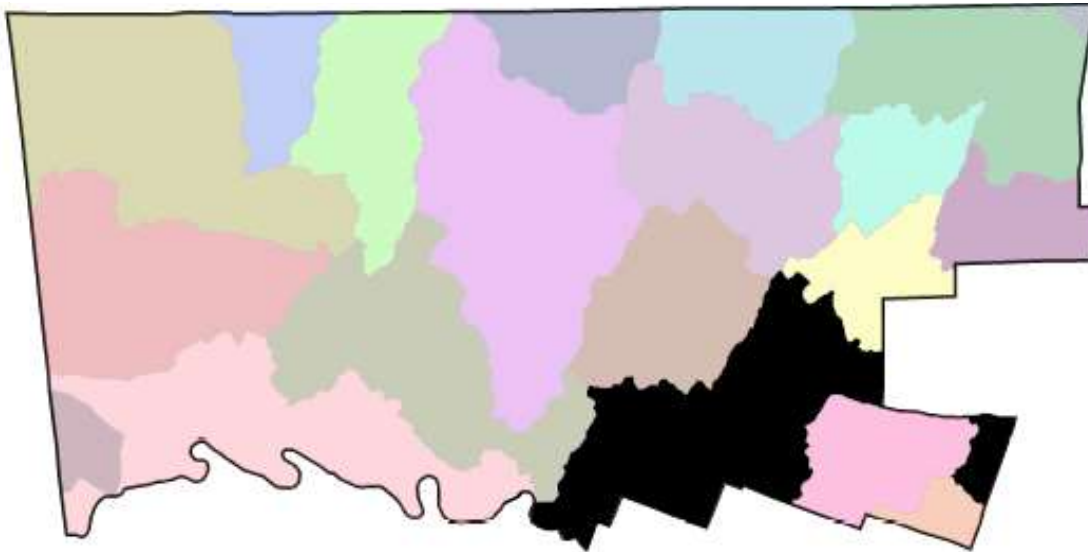


LOWER SCHUYLKILL CREEK WATERSHED

The Lower Schuylkill River watershed in the County lies within the larger Schuylkill River watershed.

The Schuylkill River is the largest tributary of the Delaware River and its watershed is located in southeastern Pennsylvania.

The river's watershed covers almost 2,000 square miles across eleven counties.



Watershed Area (In County):

29,151.00 acres

Stream Length (In County):

72.00 miles

2015 Impervious Cover (In County):

9,217.00 acres; 32%

Contributing Municipalities

- Lower Merion Township
- Narberth Borough
- Whitmarsh Township
- Springfield Township
- Conshohocken Borough
- Plymouth Township
- Whitpain Township
- West Conshohocken Borough
- Upper Merion Township
- Norristown Borough
- Bridgeport Borough
- West Norriton Township
- Lower Providence Township

Associated Organizations & Agencies



LOWER SCHUYLKILL CREEK WATERSHED

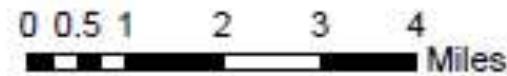
Key Watershed Maps

Major Waterbodies in Lower Schuylkill Creek Watershed Within Montgomery County



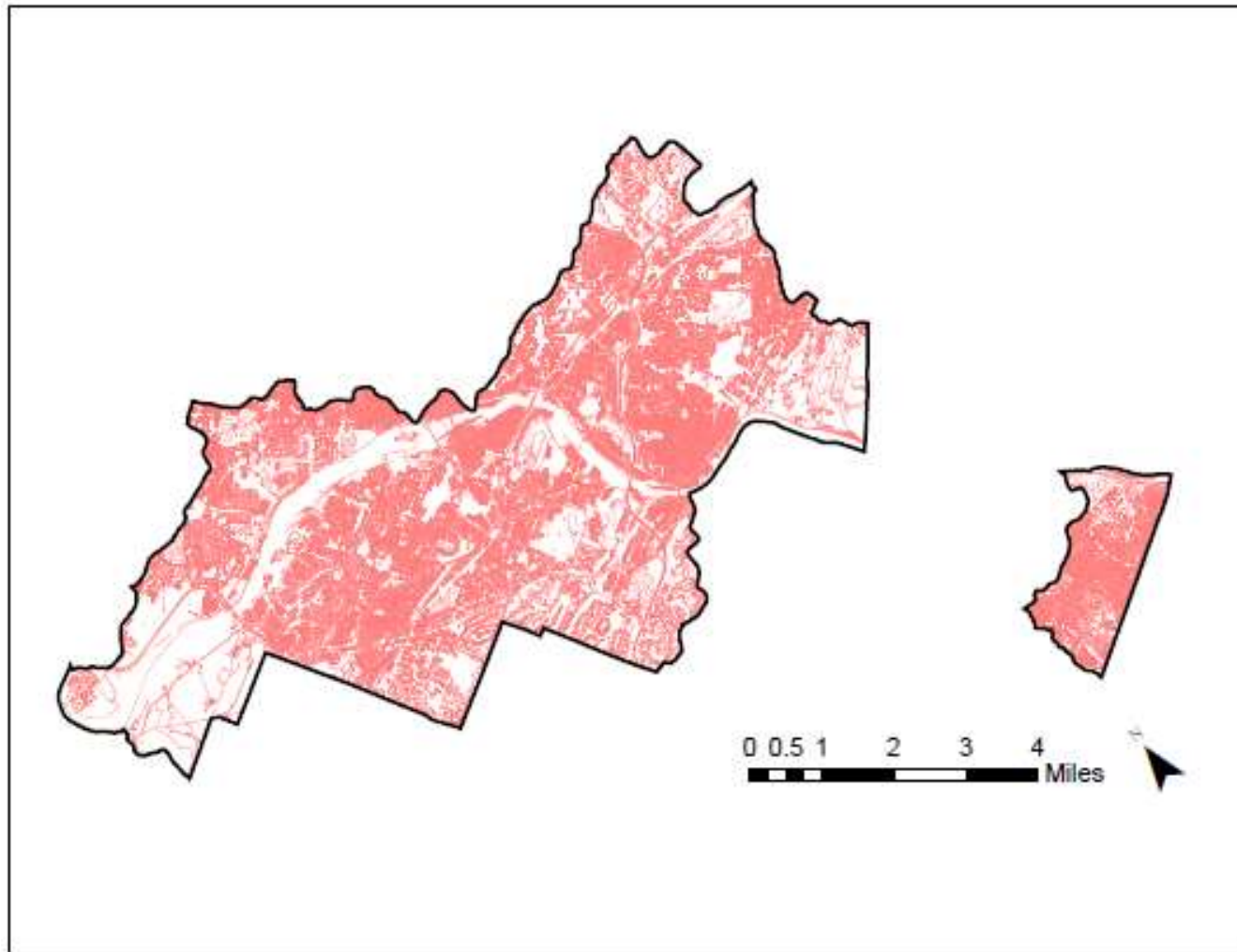
Major Tributaries

- Abrams Run
- Maschellmac Creek
- Trout Creek
- Gulph Creek
- Plymouth Creek
- Diamond Run
- Spring Mill Creek
- Matsunk Creek
- Sawmill Run
- Crow Creek



LOWER SCHUYLKILL CREEK WATERSHED

Impervious Surfaces In Lower Schuylkill Creek Watershed Within Montgomery County

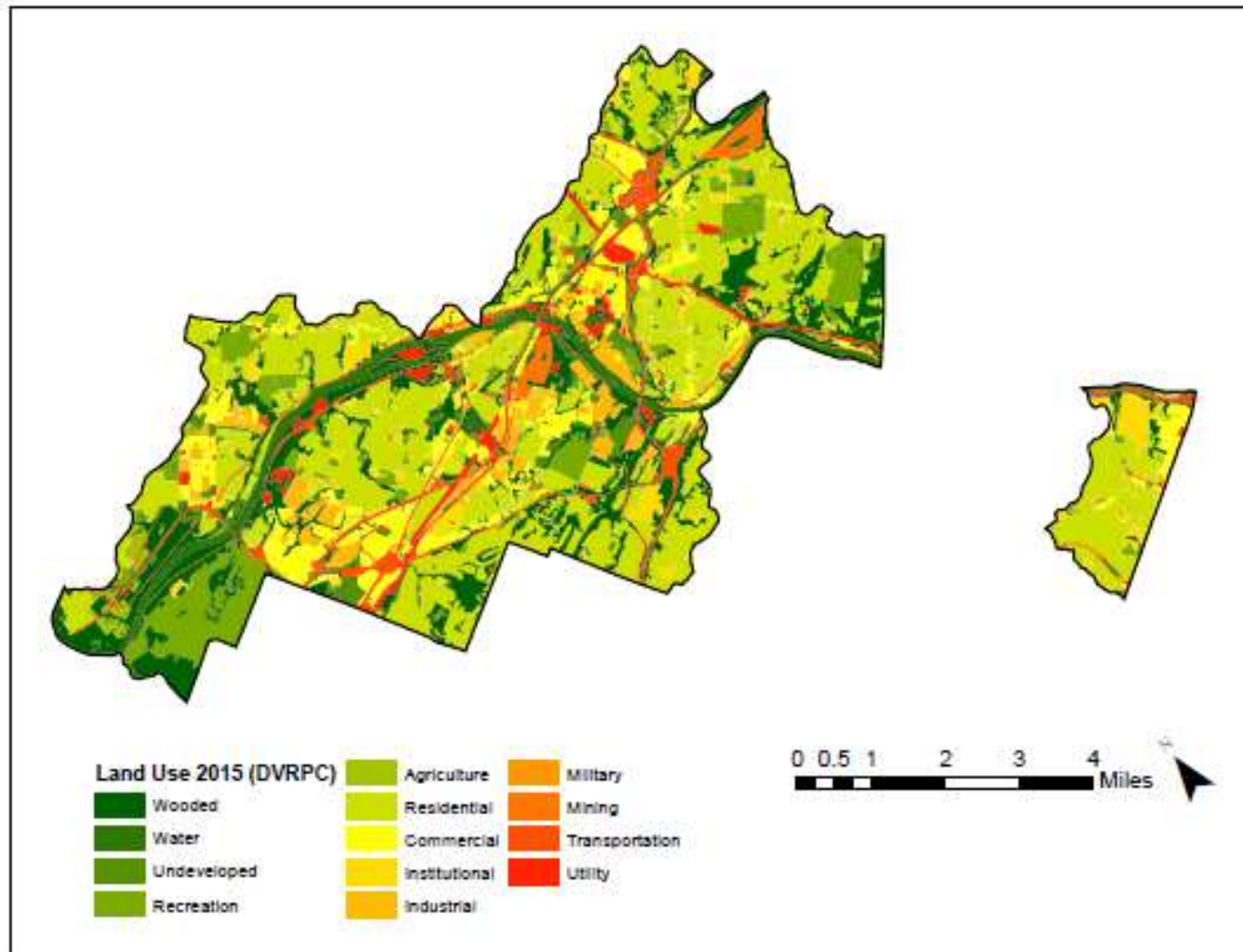


Data Source: DVRPC 2015 Impervious Surface – Montgomery County, PA



LOWER SCHUYLKILL CREEK WATERSHED

Land Use In Lower Schuylkill Creek Watershed Within Montgomery County



Data Source: DVRPC 2015 Land Use – Montgomery County, PA

