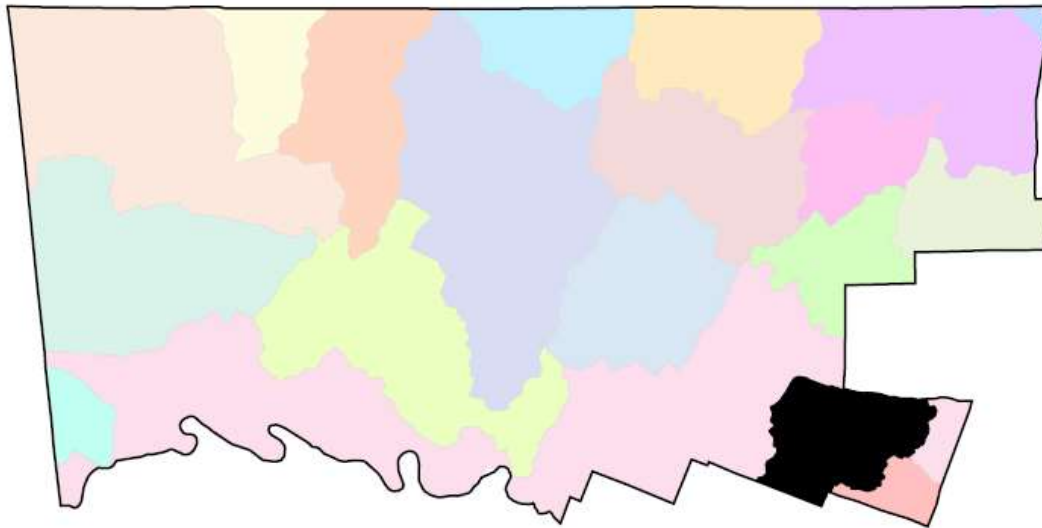


LOWER MERION DRAINAGE AREA

The Lower Merion Drainage area lies within the larger Schuylkill River watershed.

The Schuylkill River is the largest tributary of the Delaware River and its watershed is located in southeastern Pennsylvania.

The Schuylkill River's watershed covers almost 2,000 square miles across eleven counties.



Watershed Area (In County):

10,106.00 acres

Stream Length (In County):

26.00 miles

2015 Impervious Cover (In County):

2,413.00 acres; 24%

Associated Organizations & Agencies



Contributing Municipalities

- Lower Merion Township



LOWER MERION DRAINAGE AREA

Key Watershed Maps

Key Watershed Documents

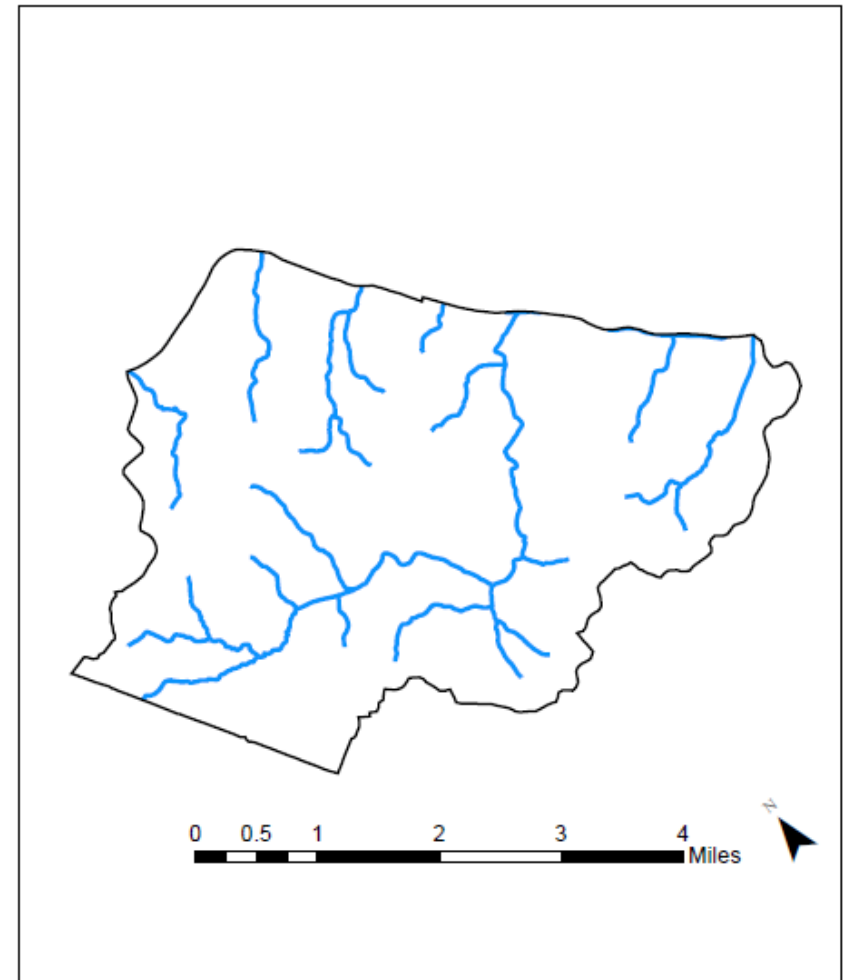
An Act 167 Stormwater Management Plan was completed for the Lower Merion Drainage Area in 1997 under the leadership of the Montgomery County Planning Commission. [tell me more](#)

A Total Maximum Daily Load (TMDL) was established for the Lower Merion Drainage Area related to sediments and nutrients. [tell me more](#)

Major Tributaries

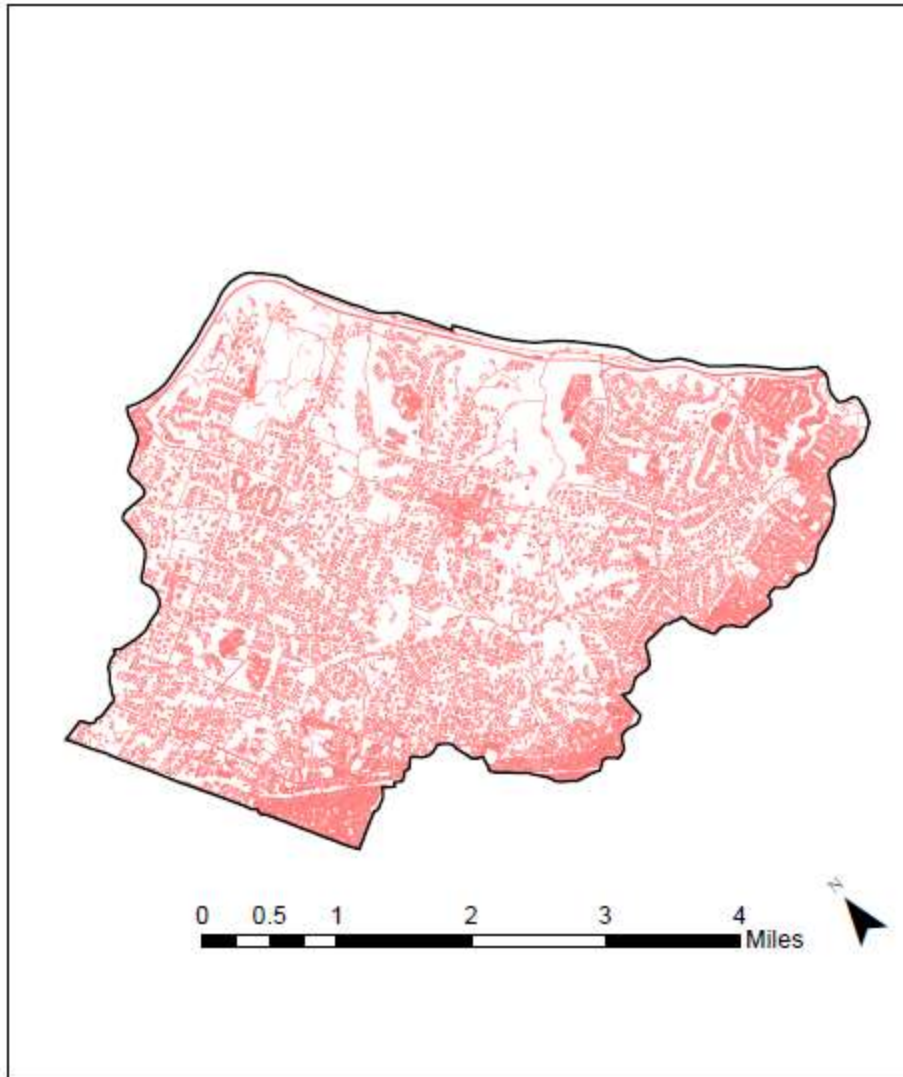
- Arrowmink Creek
- Gully Run
- Mill Creek
- Sawmill Run
- Trout Run

Major Waterbodies in Lower Merion Drainage Area Within Montgomery County



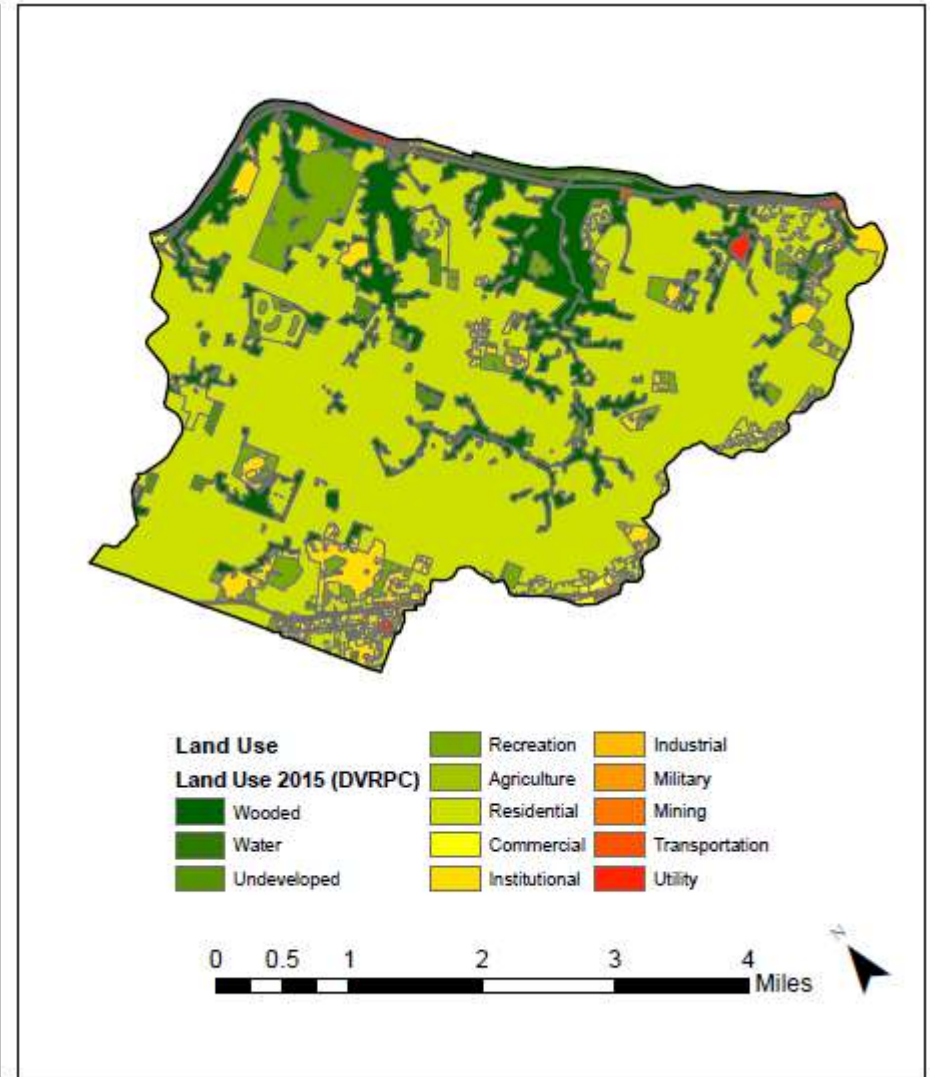
LOWER MERION DRAINAGE AREA

Impervious Surfaces In Lower Merion Drainage Area Within Montgomery County



Data Source: DVRPC 2015 Impervious Surface – Montgomery County, PA

Land Use In Lower Merion Drainage Area Within Montgomery County



Data Source: DVRPC 2015 Land Use – Montgomery County, PA

