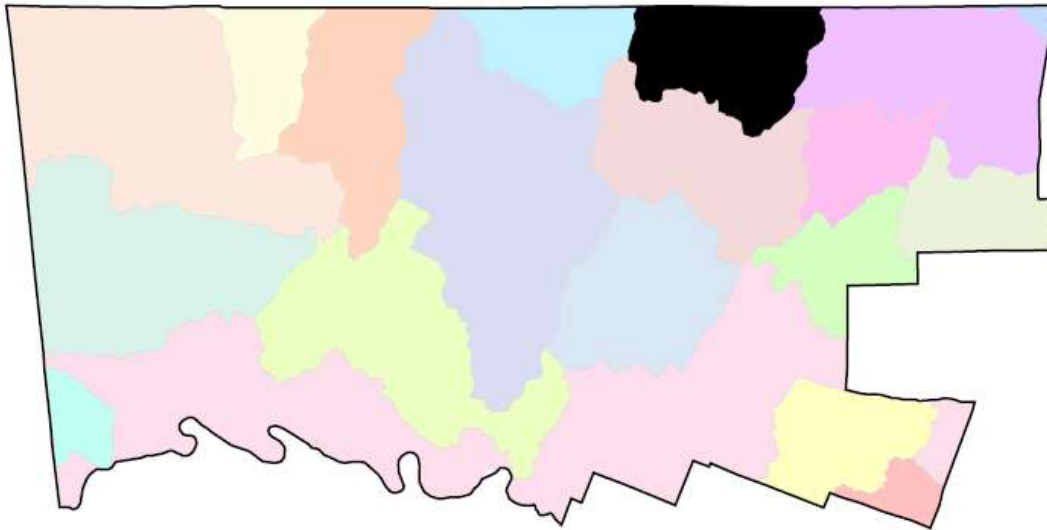


LITTLE NESHAMINY CREEK WATERSHED

The Little Neshaminy Creek watershed lies within the larger Upper Neshaminy Creek watershed and spans over 43 square miles across municipalities in Bucks and Montgomery counties.



Watershed Area (In County):

12,403.00 acres

Stream Length (In County):

30.00 miles

2015 Impervious Cover (In County):

3,040.00 acres; 25%

Contributing Municipalities

- Montgomery Township
- Horsham Township
- Upper Gwynedd Township
- Lower Gwynedd Township
- Upper Dublin Township

Associated Organizations & Agencies

[Neshaminy Creek Watershed Association](#)



LITTLE NESHAMINY CREEK WATERSHED

Key Watershed Documents

An Act 167 Stormwater Management Plan was completed for the Neshaminy Creek Watershed in 2010 under the leadership of the Bucks County Planning Commission. [tell me more](#)

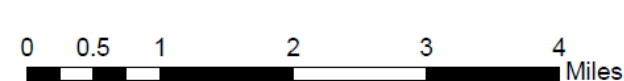
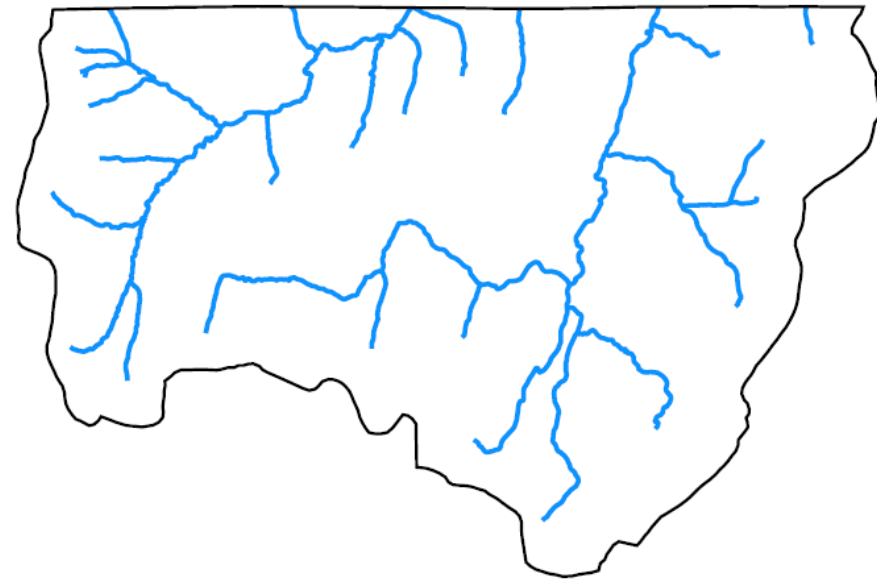
Portions of the Neshaminy Creek watershed are impaired by excess phosphorus and sediment. [tell me more](#)

Major Tributaries

- Park Creek

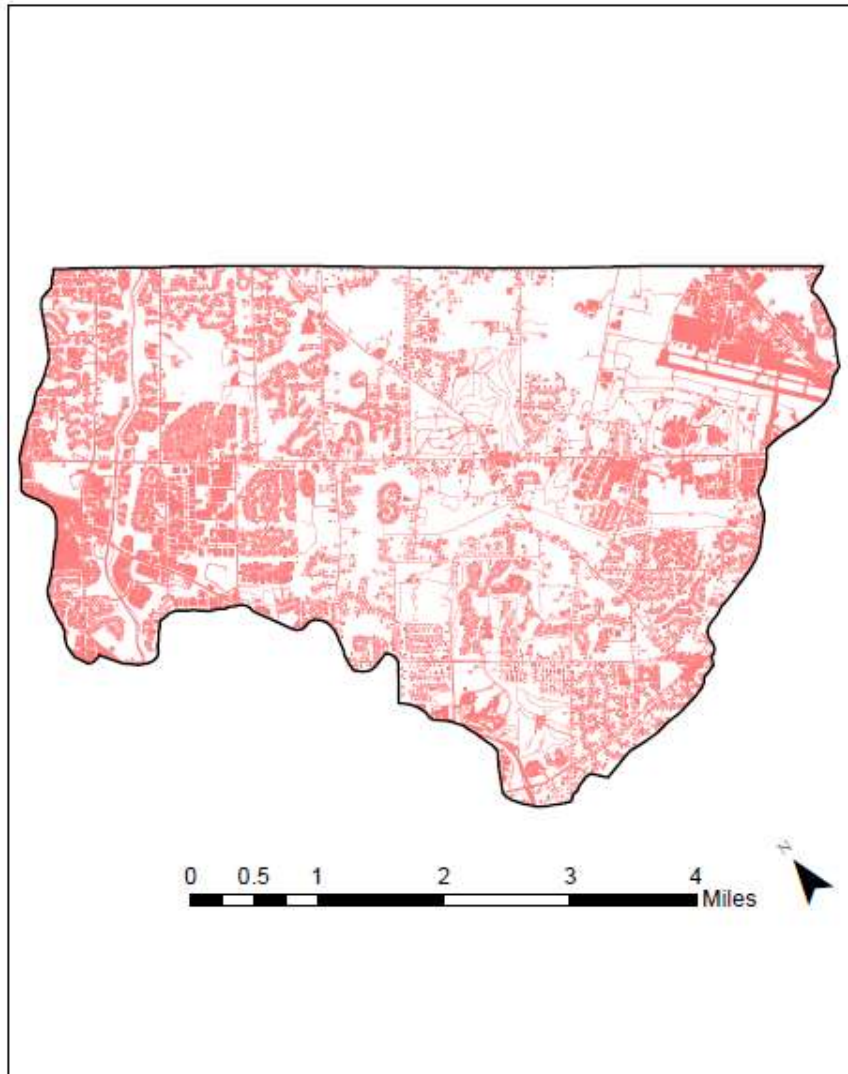
Key Watershed Maps

Major Waterbodies in Little Neshaminy Creek Watershed
Within Montgomery County



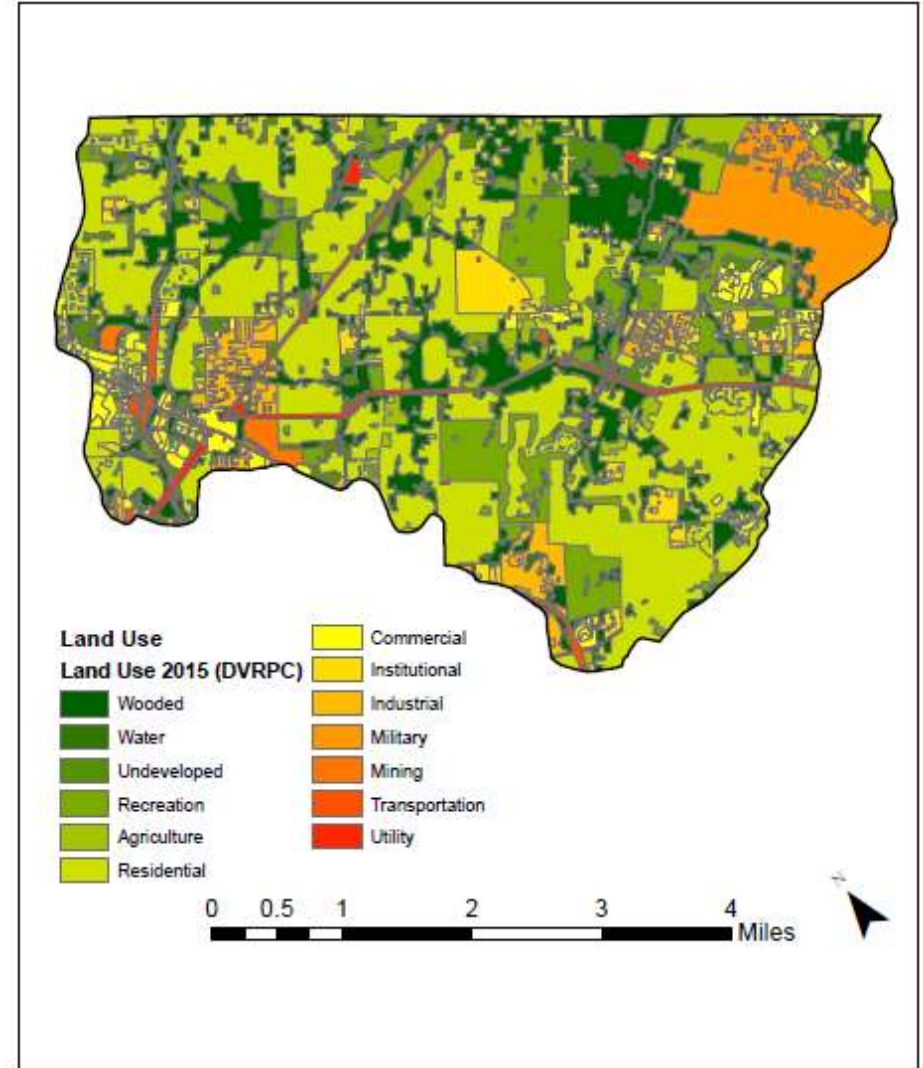
LITTLE NESHAMINY CREEK WATERSHED

Impervious Surfaces In Little Neshaminy Creek Watershed
Within Montgomery County



Data Source: DVRPC 2015 Impervious Surface – Montgomery County, PA

Land Use In Little Neshaminy Creek Watershed Within
Montgomery County



Data Source: DVRPC 2015 Land Use – Montgomery County, PA

