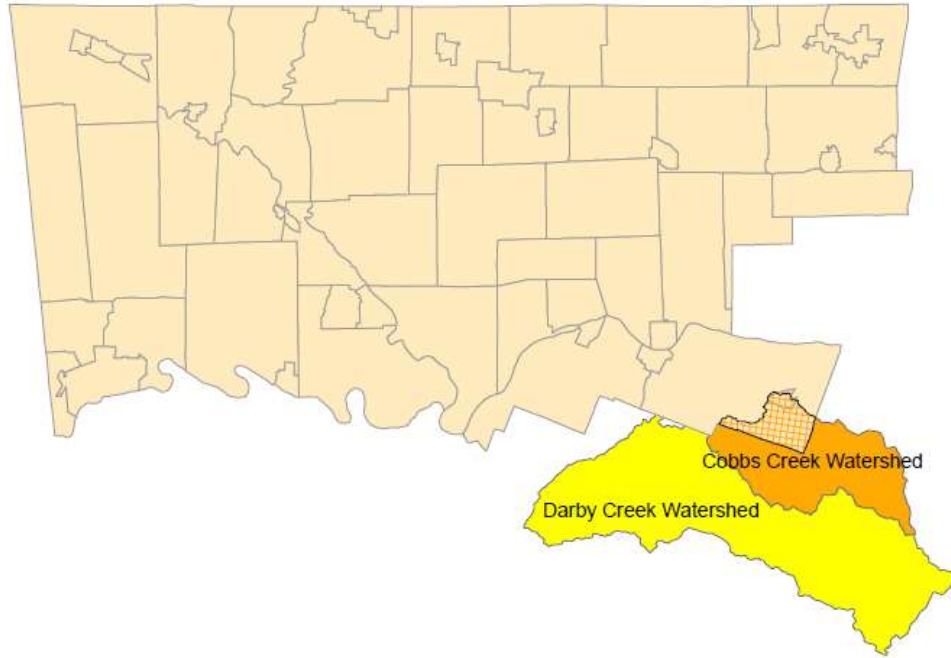


# INDIAN CREEK WATERSHED



The Indian Creek watershed lies within the larger Darby Cobbs Creek watershed.

The Darby Cobbs Creek watershed covers an area of 77 square miles, and is situated in thirty-one (31) municipalities in Montgomery, Chester, Delaware, and Philadelphia counties.

---

### Watershed Area (In County):

2,588.00 acres

### Stream Length (In County):

4.00 miles

### 2015 Impervious Cover (In County):

1,047.00 acres, 40%

---

### Contributing Municipalities

- Lower Merion Township
- Narberth Borough

### Associated Organizations & Agencies



# INDIAN CREEK WATERSHED

## Key Watershed Documents

An Act 167 Stormwater Management Plan was completed for the Darby-Cobbs Watershed in 2004 under the leadership of the Delaware County Planning Department. [tell me more](#)

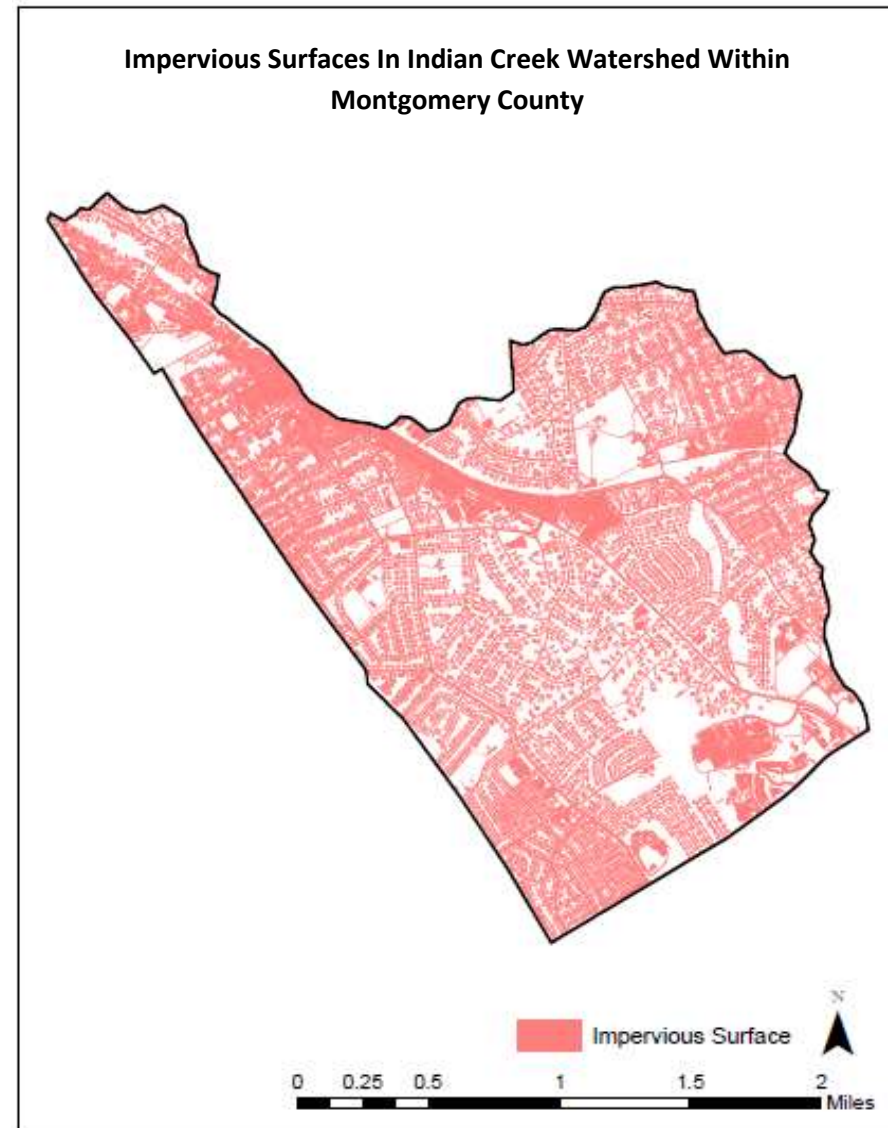
A Total Maximum Daily Load (TMDL) was established for the Indian Creek Watershed related to nutrients and sediment. [tell me more](#)

## Key Watershed Maps

Major Waterbodies in Indian Creek Watershed Within Montgomery County



Impervious Surfaces In Indian Creek Watershed Within Montgomery County

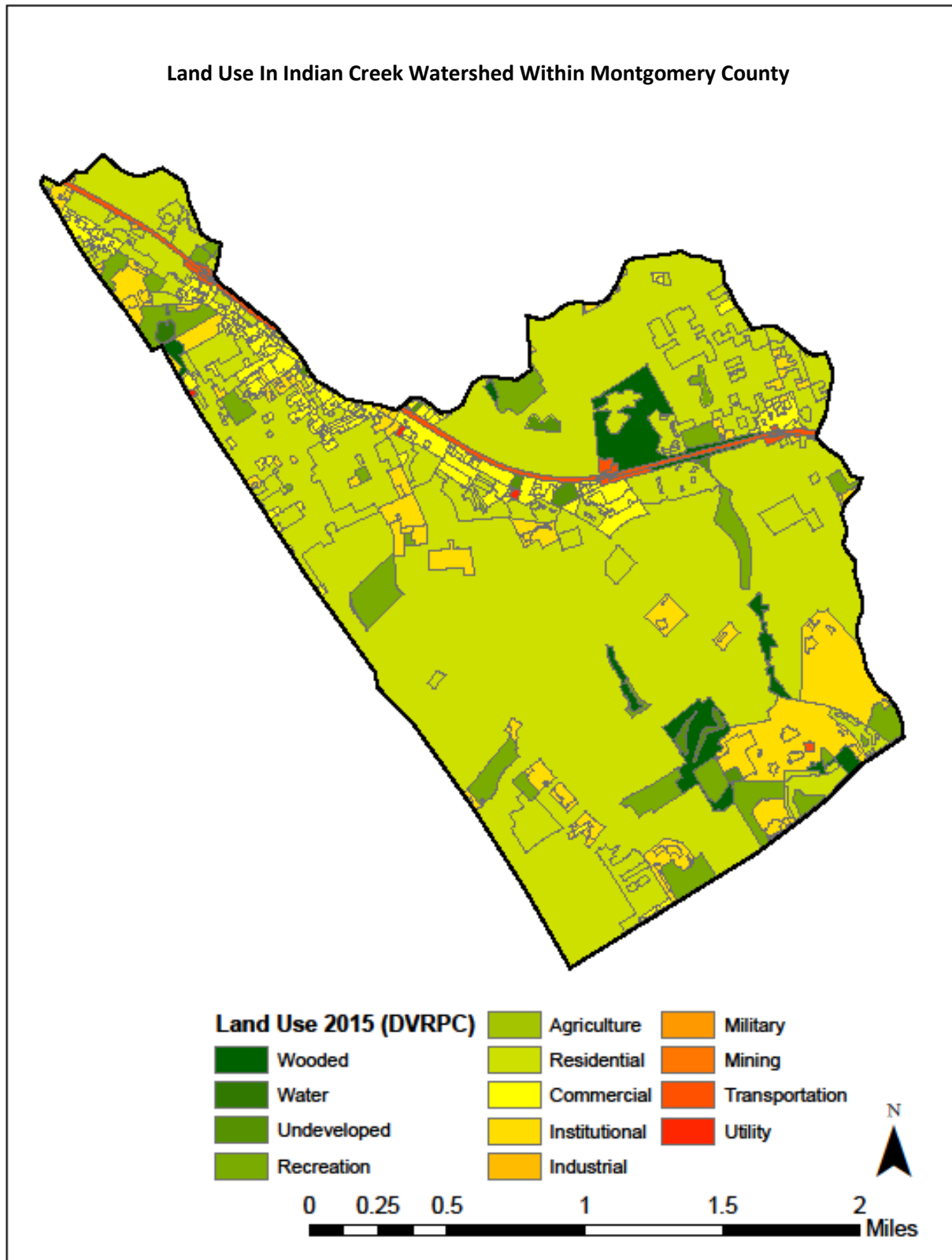


Data Source: DVRPC 2015 Impervious Surface – Montgomery County, PA



# INDIAN CREEK WATERSHED

Land Use In Indian Creek Watershed Within Montgomery County



Data Source: DVRPC 2015 Land Use – Montgomery County, PA

