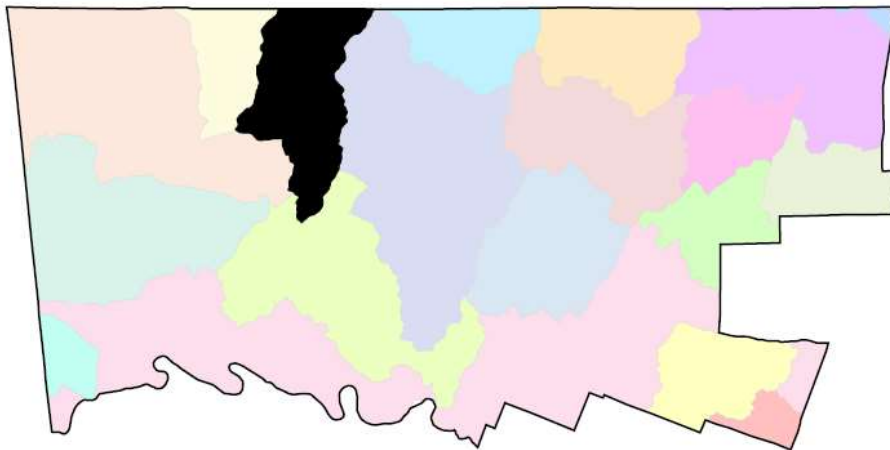


EAST BRANCH PERKIOMEN CREEK WATERSHED

The East Branch Perkiomen Creek watershed area within the County lies within the larger East Branch Perkiomen Creek watershed.

The East Branch Perkiomen Creek watershed area extends across almost 61 square miles in multiple municipalities of Montgomery and Bucks counties.

This watershed is a tributary of the Perkiomen Creek, and joins the creek at Schwenksville in Montgomery County.



Watershed Area (In County):

14,629.00 acres

Stream Length (In County):

62.00 miles

2015 Impervious Cover (In County):

1,775.00 acres, 12%

Contributing Municipalities

- Salford Township
- Franconia Township
- Telford Borough
- Upper Salford Township
- Souderton Borough
- Lower Salford Township
- Perkiomen Township

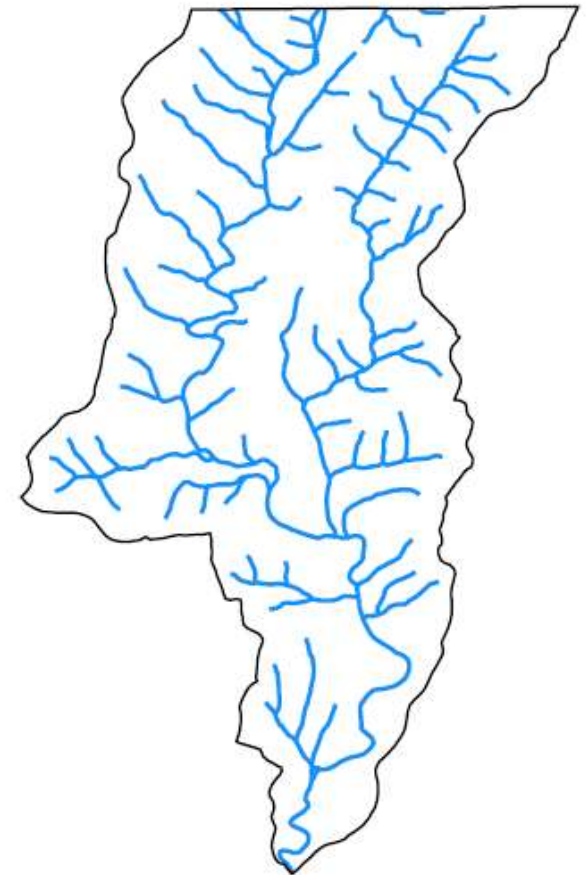
Associated Organizations & Agencies



EAST BRANCH PERKIOMEN CREEK WATERSHED

Key Watershed Maps

Major Waterbodies in East Branch Perkiomen Watershed Within Montgomery County



0 0.5 1 2 3 4 Miles



Key Watershed Documents

An Act 167 Stormwater Management Plan was completed for the East Branch Perkiomen Watershed in 2004 under the leadership of the Bucks County Planning Commission. [tell me more](#)

Portions of the Perkiomen Creek watershed are impaired by excess nutrients, erosion and sediment from agricultural and small residential development nonpoint sources and municipal point sources. [tell me more](#)

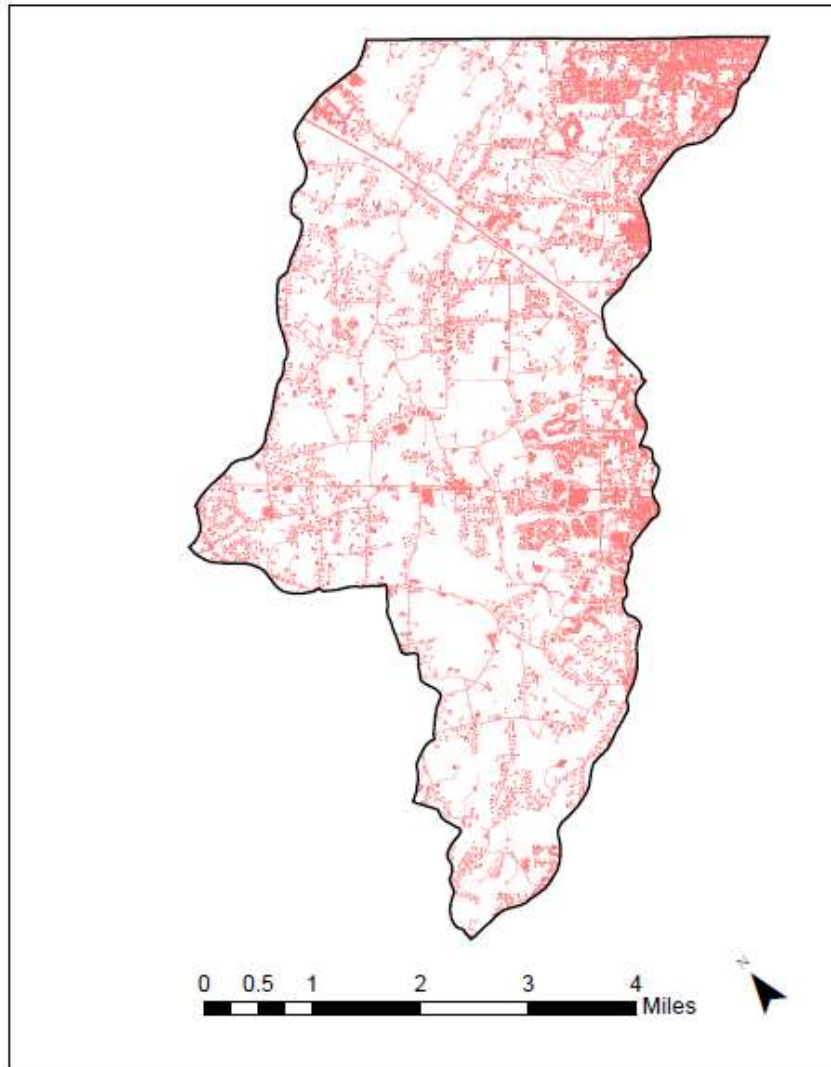
Major Tributaries

- Indian Creek
- Vaughn Run



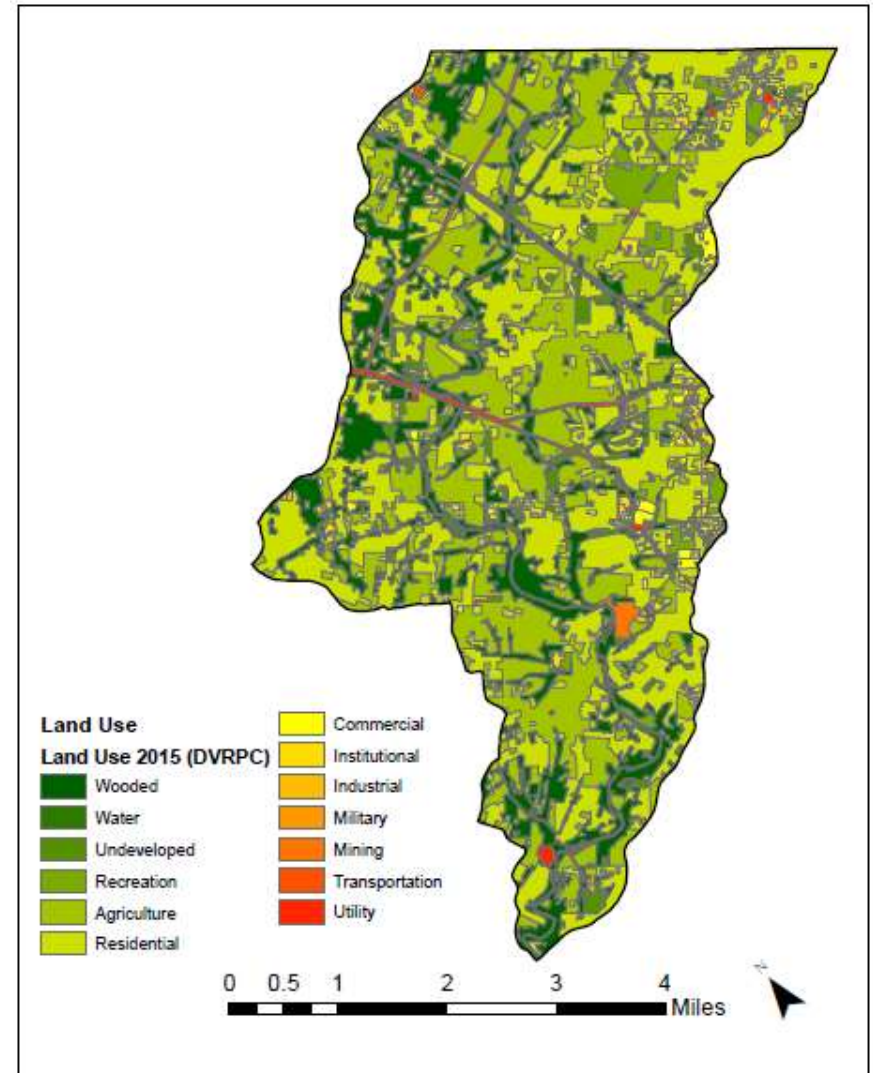
EAST BRANCH PERKIOMEN CREEK WATERSHED

Impervious Surfaces In East Branch Perkiomen Watershed
Within Montgomery County



Data Source: DVRPC 2015 Impervious Surface – Montgomery County, PA

Land Use In East Branch Perkiomen Watershed Within
Montgomery County



Data Source: DVRPC 2015 Land Use – Montgomery County, PA

