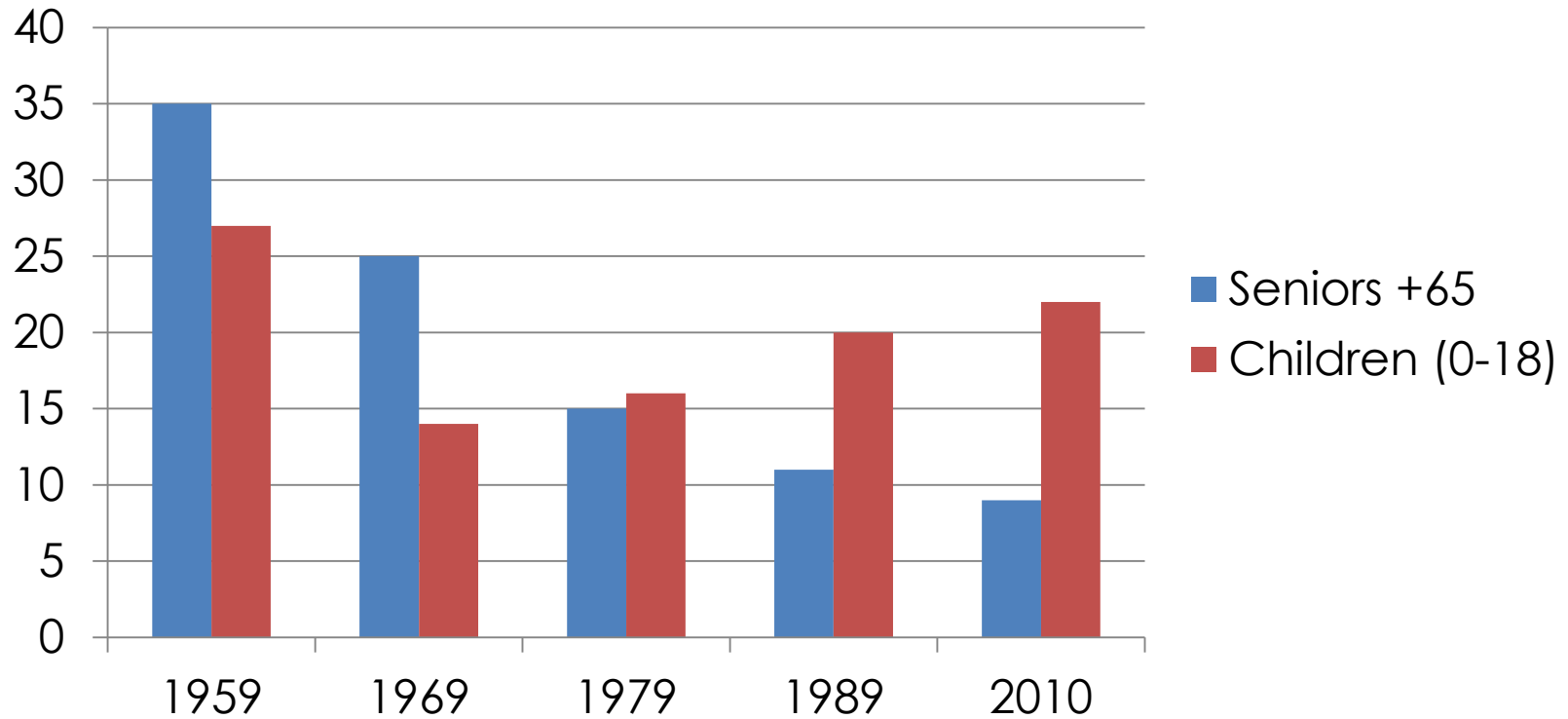
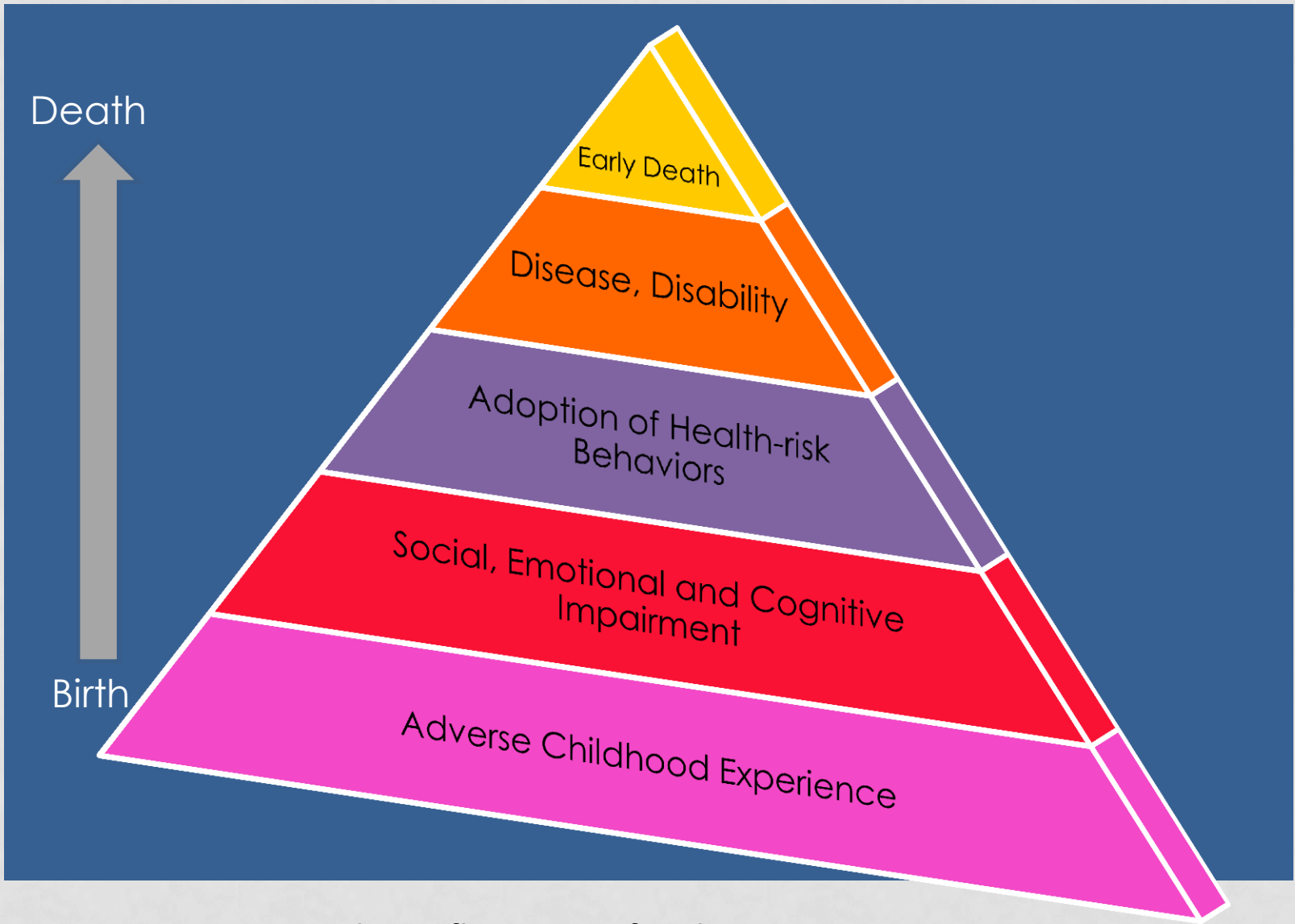


Poverty Rates for Seniors and Children





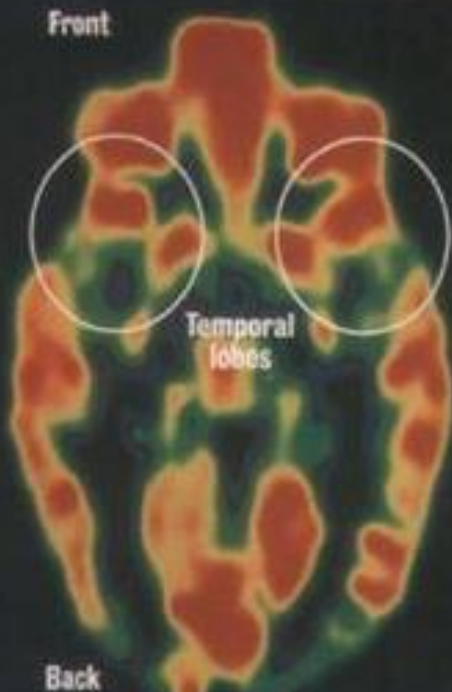
The Influence of Adverse Childhood Experiences Throughout Life



Frequent or continual stress on young children who lack adequate protection and support from adults

Healthy Brain

This PET scan of the brain of a normal child shows regions of high (red) and low (blue and black) activity. At birth, only primitive structures such as the brain stem (center) are fully functional, as regions like the temporal lobes (top), which regulate emotions and receive input from the senses, are nearly quiescent. Such children suffer emotional and cognitive problems.



An Abused Brain

This PET scan of the brain of a Romanian orphan, who was institutionalized shortly after birth, shows the effect of extreme deprivation in infancy. The temporal lobes (top), which regulate emotions and receive input from the senses, are nearly quiescent. Such children suffer emotional and cognitive problems.

